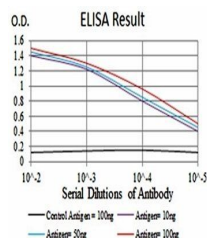


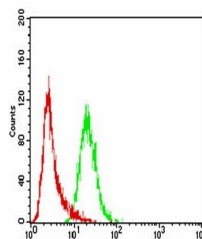
Product Datasheet

WTAP Antibody (orb229791)

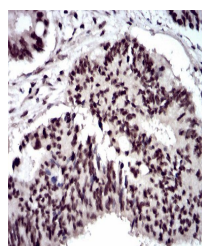
| | |
|----------------------------|-----------------------------------------------------------------------------------------------------------------------------------------|
| Description | Mouse monoclonal antibody to WTAP |
| Species/Host | Mouse |
| Reactivity | Human |
| Conjugation | Unconjugated |
| Tested Applications | ELISA, FC, IHC |
| Immunogen | Purified recombinant fragment of human WTAP (AA: 91-201) expressed in E. Coli. |
| Preservatives | Purified antibody in PBS with 0.05% sodium azide |
| Concentration | 1mg/ml |
| Storage | Maintain refrigerated at 2-8°C for up to 2 weeks. For long term storage store at -20°C in small aliquots to prevent freeze-thaw cycles. |
| Note | For research use only |
| Isotype | Mouse IgG1 |
| Clonality | Monoclonal |
| MW | 44.2kDa |
| Entrez | 9589 |
| Dilution Range | IHC: 1/200 - 1/1000; RCM: 1/200 - 1/400; ELISA: 1/10000 |
| Expiration Date | 12 months from date of receipt. |



ELISA Black line:
Control Antigen (100
n...



Flow cytometric
analysis of HeLa cells
u...



Immunohistochemical
analysis of formalin...