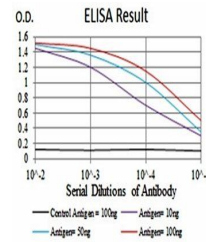


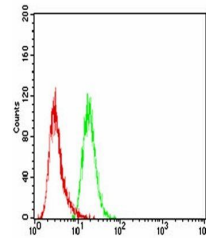
Product Datasheet

SLINGSHOT-1L Antibody (orb229785)

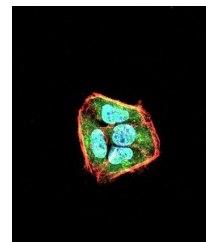
Description	Mouse monoclonal antibody to SLINGSHOT-1L
Species/Host	Mouse
Reactivity	Human
Conjugation	Unconjugated
Tested Applications	ELISA, FC, ICC
Immunogen	Synthesized peptide fragment of human SLINGSHOT-1L (AA: 1032-1044) expressed in E. Coli.
Preservatives	Purified antibody in PBS with 0.05% sodium azide
Concentration	1mg/ml
Storage	Maintain refrigerated at 2-8°C for up to 2 weeks. For long term storage store at -20°C in small aliquots to prevent freeze-thaw cycles.
Note	For research use only
Isotype	Mouse IgG1
Clonality	Monoclonal
MW	115.5kDa
Entrez	54434
Dilution Range	ICC: 1/200 - 1/1000; RCM: 1/200 - 1/400; ELISA: 1/10000
Expiration Date	12 months from date of receipt.



ELISA Black line:
Control Antigen (100
n...



Flow cytometric
analysis of HeLa cells
u...



Immunofluorescence
analysis of HeLa
cell...