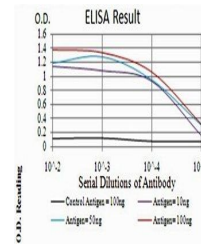


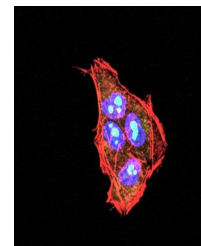
Product Datasheet

PLCG2 Antibody (orb229751)

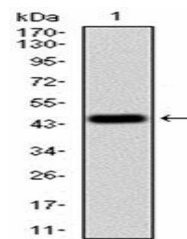
Description	Mouse monoclonal antibody to PLCG2
Species/Host	Mouse
Reactivity	Human
Conjugation	Unconjugated
Tested Applications	ELISA, IHC
Immunogen	Purified recombinant fragment of human PLCG2 (AA: 826-985) expressed in E. Coli.
Preservatives	Purified antibody in PBS with 0.05% sodium azide
Concentration	1mg/ml
Storage	Maintain refrigerated at 2-8°C for up to 2 weeks. For long term storage store at -20°C in small aliquots to prevent freeze-thaw cycles.
Note	For research use only
Isotype	Mouse IgG1
Clonality	Monoclonal
MW	147.9kDa
Entrez	5336
Dilution Range	IHC: 1/200 - 1/1000; ELISA: 1/10000
Expiration Date	12 months from date of receipt.



ELISA Black line:
Control Antigen (100
n...



Immunohistochemical
analysis of formalin...



Western blot analysis
of human
recombina...