

## Product Datasheet

### CCR5 purified MaxPab mouse polyclonal antibody (B02P) (orb2294311)

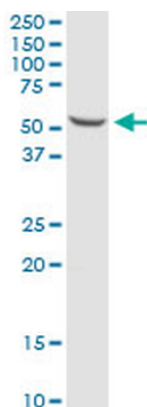
<b>Description</b>	Mouse polyclonal antibody raised against a full-length human CCR5 protein.
<b>Species/Host</b>	Mouse
<b>Reactivity</b>	Human
<b>Conjugation</b>	Unconjugated
<b>Tested Applications</b>	FC, WB
<b>Immunogen</b>	CCR5 (XP_001125981.1, 1 a.a. ~ 352 a.a) full-length human protein.
<b>Preservatives</b>	In 1x PBS, pH 7.4
<b>Storage</b>	Maintain refrigerated at 2-8°C for up to 2 weeks. For long term storage store at -20°C in small aliquots to prevent freeze-thaw cycles.
<b>Note</b>	For research use only
<b>Protein Sequence</b>	MDYQVSSPIYDINYTSEPCQKINVKQIAARLLPPLYSLVFIFGFVGNMLVILILINCKRLKSMT DIYLLNLAISDLFFLLTVPFWAHYAAAQWDFGNTMCQLLTGLYFIGFFSGIFFIILLTIDRYLAV VHAVFALKARTVTFGVVTSVITWVVAVFASLPGIIFTRSQKEGLHYTCSSHPYSQYQFWKN FQTLKIVILGLVLP LLVMVICYSGILKTLLRCRNEKKRHRAVRLIFTIMIVYFLFWAPYNIVLLL TFQEFFGLNNCSSNRLDQAMQVTETLGMTHCCINPIIYAFVGEKFRNYLLVFFQKHIKRFC KCCSIFQQEAPERASSVYTRSTGEQEISVGL
<b>Clonality</b>	Polyclonal
<b>NCBI</b>	<a href="#">XP_001125981.1</a>
<b>Expiration Date</b>	12 months from date of receipt.

**Biorbyt Ltd.**

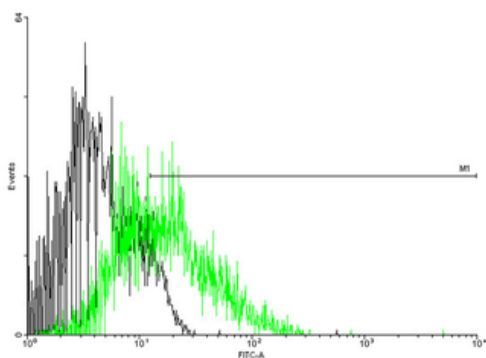
7 Signet Court, Swann's Road,  
Cambridge, CB5 8LA, United Kingdom  
Email: [info@biorbyt.com](mailto:info@biorbyt.com), [support@biorbyt.com](mailto:support@biorbyt.com)  
Phone: [+44 \(0\) 1223 859-353](tel:+44(0)1223859353) | Fax: [+1 \(415\) 651-8558](tel:+1(415)6518558)

**Biorbyt LLC.**

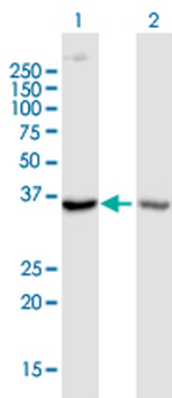
68 TW Alexander Drive,  
Durham, NC, 27713, United States  
Email: [info@biorbyt.com](mailto:info@biorbyt.com), [support@biorbyt.com](mailto:support@biorbyt.com)  
Phone: [+1 \(415\) 906-5211](tel:+1(415)9065211) | Fax: [+1 \(415\) 651-8558](tel:+1(415)6518558)



CCR5 MaxPab polyclonal antibody. Western Blot analysis of CCR5 expression in HeLa.



FACS analysis of negative control 293 cells (Black) and CCR5 expressing 293 cells (Green) using CCR5 purified MaxPab mouse polyclonal antibody.



Western Blot analysis of CCR5 expression in transfected 293T cell line by CCR5 MaxPab polyclonal antibody. Lane 1: CCR5 transfected lysate(40.05 KDa). Lane 2: Non-transfected lysate.

**Biorbyt Ltd.**

7 Signet Court, Swann's Road,  
Cambridge, CB5 8LA, United Kingdom  
Email: [info@biorbyt.com](mailto:info@biorbyt.com), [support@biorbyt.com](mailto:support@biorbyt.com)  
Phone: [+44 \(0\) 1223 859-353](tel:+44(0)1223859353) | Fax: [+1 \(415\) 651-8558](tel:+1(415)6518558)

**Biorbyt LLC.**

68 TW Alexander Drive,  
Durham, NC, 27713, United States  
Email: [info@biorbyt.com](mailto:info@biorbyt.com), [support@biorbyt.com](mailto:support@biorbyt.com)  
Phone: [+1 \(415\) 906-5211](tel:+1(415)9065211) | Fax: [+1 \(415\) 651-8558](tel:+1(415)6518558)