

Product Datasheet

CTF1 purified MaxPab rabbit polyclonal antibody (D01P) (orb2293964)

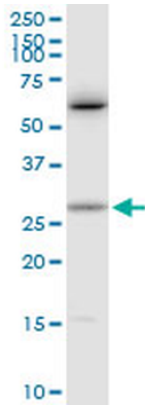
Description	Rabbit polyclonal antibody raised against a full-length human CTF1 protein.
Species/Host	Rabbit
Reactivity	Human
Conjugation	Unconjugated
Tested Applications	WB
Immunogen	CTF1 (NP_001321.1, 1 a.a. ~ 201 a.a) full-length human protein.
Preservatives	In 1x PBS, pH 7.4
Storage	Maintain refrigerated at 2-8°C for up to 2 weeks. For long term storage store at -20°C in small aliquots to prevent freeze-thaw cycles.
Note	For research use only
Protein Sequence	MSRREGSLEDPQTDSSVSLPHLEAKIRQTHSLAHLTKYAEQLLQEYVQLQGDPFGLPSFS PPRLPVAGLSAPAPSHAGLPVHERLRLDAAALAALPPLLDVAVCRRQAEINPRAPRLRRLED AARQARALGAAVEALLAALGAANRGPRAEPPAATASAASATGVFPAKVLGLRVCGLYREWLSRTEGDLGQLLPGGSA
Clonality	Polyclonal
NCBI	NP_001321.1
Expiration Date	12 months from date of receipt.

Biorbyt Ltd.

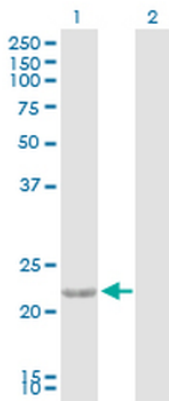
7 Signet Court, Swann's Road,
Cambridge, CB5 8LA, United Kingdom
Email: info@biorbyt.com, support@biorbyt.com
Phone: [+44 \(0\) 1223 859-353](tel:+44(0)1223859353) | Fax: [+1 \(415\) 651-8558](tel:+1(415)6518558)

Biorbyt LLC.

68 TW Alexander Drive,
Durham, NC, 27713, United States
Email: info@biorbyt.com, support@biorbyt.com
Phone: [+1 \(415\) 906-5211](tel:+1(415)9065211) | Fax: [+1 \(415\) 651-8558](tel:+1(415)6518558)



CTF1 MaxPab rabbit polyclonal antibody. Western Blot analysis of CTF1 expression in Jurkat.



Western Blot analysis of CTF1 expression in transfected 293T cell line by CTF1 MaxPab polyclonal antibody. Lane 1: CTF1 transfected lysate (21.20 KDa). Lane 2: Non-transfected lysate.

Biorbyt Ltd.

7 Signet Court, Swann's Road,
Cambridge, CB5 8LA, United Kingdom
Email: info@biorbyt.com, support@biorbyt.com
Phone: [+44 \(0\) 1223 859-353](tel:+44(0)1223859353) | Fax: [+1 \(415\) 651-8558](tel:+1(415)6518558)

Biorbyt LLC.

68 TW Alexander Drive,
Durham, NC, 27713, United States
Email: info@biorbyt.com, support@biorbyt.com
Phone: [+1 \(415\) 906-5211](tel:+1(415)9065211) | Fax: [+1 \(415\) 651-8558](tel:+1(415)6518558)