

## Product Datasheet

# EPCAM purified MaxPab rabbit polyclonal antibody (D01P) (orb2292633)

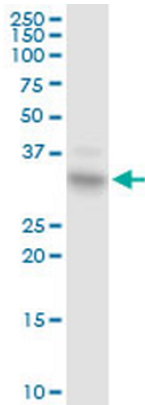
<b>Description</b>	Rabbit polyclonal antibody raised against a full-length human EPCAM protein.
<b>Species/Host</b>	Rabbit
<b>Reactivity</b>	Human
<b>Conjugation</b>	Unconjugated
<b>Tested Applications</b>	WB
<b>Immunogen</b>	EPCAM (NP_002345.1, 1 a.a. ~ 314 a.a) full-length human protein.
<b>Preservatives</b>	In 1x PBS, pH 7.4
<b>Storage</b>	Maintain refrigerated at 2-8°C for up to 2 weeks. For long term storage store at -20°C in small aliquots to prevent freeze-thaw cycles.
<b>Note</b>	For research use only
<b>Protein Sequence</b>	MAPPQVLAFLGLLLAAATATFAAAQEECVCENYKLAVNCFVNNNRQCQCTSVGAQNTVICSK LAAKCLVMKAEMNGSKLGRRAKPEGALQNNGLYDPDCDESLFKAKQCNGTSTCWCVN TAGVRRTDKDTEITCSERVRTYWIIELKHKAREKPYDSKSLRTALQKEITTRYQLDPKFITSIL YENNVIDLQNSSQKTQNDVDIADVAYYFEKDVKGESLFHSSKMDLTVNGEQLDLDPGQ TLIIYYVDEKAPEFSMQGLKAGVIAVIVVVVIAVVAGIVVLVISRKKRMAKYEKAEIKEMGEMH RELNA
<b>Clonality</b>	Polyclonal
<b>NCBI</b>	<a href="#">NP_002345.1</a>
<b>Expiration Date</b>	12 months from date of receipt.

**Biorbyt Ltd.**

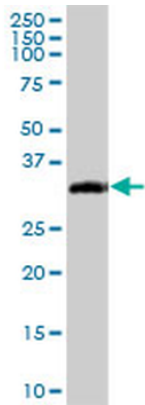
7 Signet Court, Swann's Road,  
Cambridge, CB5 8LA, United Kingdom  
Email: [info@biorbyt.com](mailto:info@biorbyt.com), [support@biorbyt.com](mailto:support@biorbyt.com)  
Phone: [+44 \(0\) 1223 859-353](tel:+44(0)1223859353) | Fax: [+1 \(415\) 651-8558](tel:+1(415)6518558)

**Biorbyt LLC.**

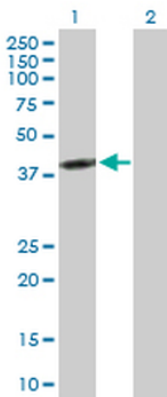
68 TW Alexander Drive,  
Durham, NC, 27713, United States  
Email: [info@biorbyt.com](mailto:info@biorbyt.com), [support@biorbyt.com](mailto:support@biorbyt.com)  
Phone: [+1 \(415\) 906-5211](tel:+1(415)9065211) | Fax: [+1 \(415\) 651-8558](tel:+1(415)6518558)



EPCAM MaxPab rabbit polyclonal antibody. Western Blot analysis of EPCAM expression in A-431.



EPCAM MaxPab rabbit polyclonal antibody. Western Blot analysis of EPCAM expression in human pancreas.



Western Blot analysis of EPCAM expression in transfected 293T cell line by EPCAM MaxPab polyclonal antibody. Lane 1: EPCAM transfected lysate (34.90 KDa). Lane 2: Non-transfected lysate.

**Biorbyt Ltd.**

7 Signet Court, Swann's Road,  
Cambridge, CB5 8LA, United Kingdom  
Email: [info@biorbyt.com](mailto:info@biorbyt.com), [support@biorbyt.com](mailto:support@biorbyt.com)  
Phone: [+44 \(0\) 1223 859-353](tel:+44(0)1223859353) | Fax: [+1 \(415\) 651-8558](tel:+1(415)6518558)

**Biorbyt LLC.**

68 TW Alexander Drive,  
Durham, NC, 27713, United States  
Email: [info@biorbyt.com](mailto:info@biorbyt.com), [support@biorbyt.com](mailto:support@biorbyt.com)  
Phone: [+1 \(415\) 906-5211](tel:+1(415)9065211) | Fax: [+1 \(415\) 651-8558](tel:+1(415)6518558)