

Product Datasheet

NRF1 monoclonal antibody (M01), clone 2F9 (orb2292491)

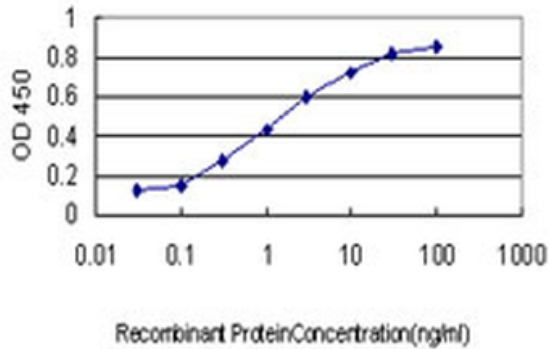
Description	Mouse monoclonal antibody raised against a partial recombinant NRF1.
Species/Host	Mouse
Reactivity	Human, Mouse
Conjugation	Unconjugated
Tested Applications	ELISA, IHC-P, WB
Immunogen	NRF1 (NP_005002, 201 a.a. ~ 285 a.a) partial recombinant protein with GST tag. MW of the GST tag alone is 26 KDa.
Preservatives	In 1x PBS, pH 7.4
Storage	Maintain refrigerated at 2-8°C for up to 2 weeks. For long term storage store at -20°C in small aliquots to prevent freeze-thaw cycles.
Note	For research use only
Protein Sequence	TQAQLRAFIPPEMLKYSTGRGKPGWGKESCKPIWWPEDIPWANVRS DVRTEEKQQRVSWT QALRTIVKNCYKQHGREDLLYAFEDQ
Isotype	IgG1 Kappa
Clonality	Monoclonal
Clone Number	2F9
NCBI	NP_005002
Expiration Date	12 months from date of receipt.

Biorbyt Ltd.

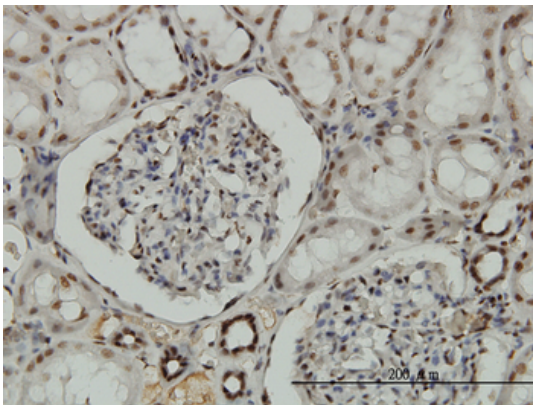
7 Signet Court, Swann's Road,
Cambridge, CB5 8LA, United Kingdom
Email: info@biorbyt.com, support@biorbyt.com
Phone: [+44 \(0\) 1223 859-353](tel:+44(0)1223859353) | Fax: [+1 \(415\) 651-8558](tel:+1(415)6518558)

Biorbyt LLC.

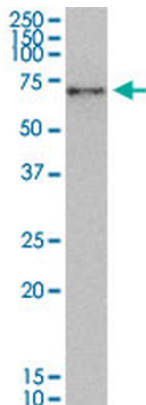
68 TW Alexander Drive,
Durham, NC, 27713, United States
Email: info@biorbyt.com, support@biorbyt.com
Phone: [+1 \(415\) 906-5211](tel:+1(415)9065211) | Fax: [+1 \(415\) 651-8558](tel:+1(415)6518558)



Detection limit for recombinant GST tagged NRF1 is approximately 0.03 ng/ml as a capture antibody.



Immunoperoxidase of monoclonal antibody to NRF1 on formalin-fixed paraffin-embedded human kidney. [antibody concentration 3 ug/ml]



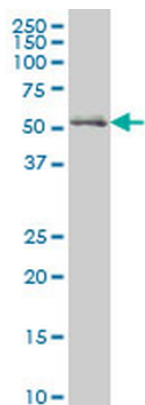
NRF1 monoclonal antibody (M01), clone 2F9. Western Blot analysis of NRF1 expression in HeLa.

Biorbyt Ltd.

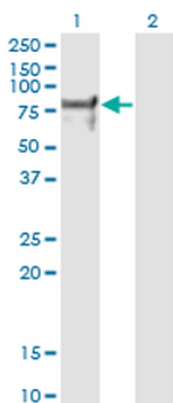
7 Signet Court, Swann's Road,
Cambridge, CB5 8LA, United Kingdom
Email: info@biorbyt.com, support@biorbyt.com
Phone: [+44 \(0\) 1223 859-353](tel:+44(0)1223859353) | Fax: [+1 \(415\) 651-8558](tel:+1(415)6518558)

Biorbyt LLC.

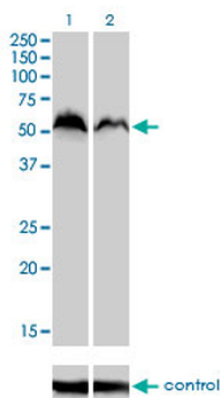
68 TW Alexander Drive,
Durham, NC, 27713, United States
Email: info@biorbyt.com, support@biorbyt.com
Phone: [+1 \(415\) 906-5211](tel:+1(415)9065211) | Fax: [+1 \(415\) 651-8558](tel:+1(415)6518558)



NRF1 monoclonal antibody (M01), clone 2F9. Western Blot analysis of NRF1 expression in human Skeletal muscle.



Western Blot analysis of NRF1 expression in transfected 293T cell line by NRF1 monoclonal antibody (M01), clone 2F9. Lane 1: NRF1 transfected lysate (Predicted MW: 55.7 KDa). Lane 2: Non-transfected lysate.



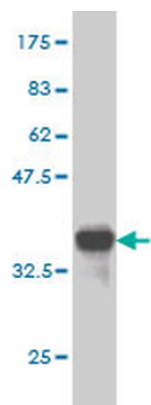
Western blot analysis of NRF1 over-expressed 293 cell line, cotransfected with NRF1 Validated Chimera RNAi (Lane 2) or non-transfected control (Lane 1). Blot probed with NRF1 monoclonal antibody (M01), clone 2F9 (Cat # orb2292491). GAPDH (36.1 kDa) used as specificity and loading control.

Biorbyt Ltd.

7 Signet Court, Swann's Road,
Cambridge, CB5 8LA, United Kingdom
Email: info@biorbyt.com, support@biorbyt.com
Phone: [+44 \(0\) 1223 859-353](tel:+44(0)1223859353) | Fax: [+1 \(415\) 651-8558](tel:+1(415)6518558)

Biorbyt LLC.

68 TW Alexander Drive,
Durham, NC, 27713, United States
Email: info@biorbyt.com, support@biorbyt.com
Phone: [+1 \(415\) 906-5211](tel:+1(415)9065211) | Fax: [+1 \(415\) 651-8558](tel:+1(415)6518558)



Western Blot detection against Immunogen (35.09 KDa).

Biorbyt Ltd.

7 Signet Court, Swann's Road,
Cambridge, CB5 8LA, United Kingdom
Email: info@biorbyt.com, support@biorbyt.com
Phone: [+44 \(0\) 1223 859-353](tel:+44(0)1223859353) | Fax: [+1 \(415\) 651-8558](tel:+1(415)6518558)

Biorbyt LLC.

68 TW Alexander Drive,
Durham, NC, 27713, United States
Email: info@biorbyt.com, support@biorbyt.com
Phone: [+1 \(415\) 906-5211](tel:+1(415)9065211) | Fax: [+1 \(415\) 651-8558](tel:+1(415)6518558)