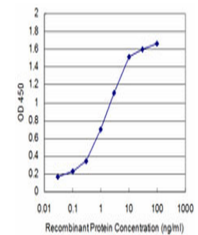


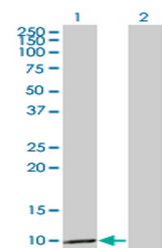
Product Datasheet

CCL3 monoclonal antibody (M01), clone 4E7 (orb2292204)

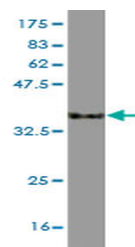
Description	Mouse monoclonal antibody raised against a partial recombinant CCL3.
Species/Host	Mouse
Reactivity	Human
Conjugation	Unconjugated
Tested Applications	ELISA, WB
Immunogen	CCL3 (NP_002974, 24 a.a. ~ 92 a.a) partial recombinant protein with GST tag. MW of the GST tag alone is 26 KDa.
Preservatives	In 1x PBS, pH 7.4
Storage	Maintain refrigerated at 2-8°C for up to 2 weeks. For long term storage store at -20°C in small aliquots to prevent freeze-thaw cycles.
Note	For research use only
Protein Sequence	SLAADTPTACCFSYTSRQIPQNFADYFETSSQCCKPGVIFLTKRSRQVCADPSEE WVQKYVSDLELSA
Isotype	IgG2a Kappa
Clonality	Monoclonal
NCBI	NP_002974
Expiration Date	12 months from date of receipt.



Detection limit for recombinant...
GST tagg...



Western Blot analysis of CCL3 expression...



Western Blot detection against Immunogen...