

Product Datasheet

RUVBL1 monoclonal antibody (M01), clone 3G4-1F8 (orb2291863)

Description	Mouse monoclonal antibody raised against a full length recombinant RUVBL1.
Species/Host	Mouse
Reactivity	Human
Conjugation	Unconjugated
Tested Applications	ELISA, IF, PLA, WB
Immunogen	RUVBL1 (AAH02993, 1 a.a. ~ 456 a.a) full-length recombinant protein with GST tag. MW of the GST tag alone is 26 KDa.
Preservatives	In 1x PBS, pH 7.4
Storage	Maintain refrigerated at 2-8°C for up to 2 weeks. For long term storage store at -20°C in small aliquots to prevent freeze-thaw cycles.
Note	For research use only
Protein Sequence	MKIEEVKSTTKTQRIASHSHVKGLGLDESLAKQAASGLVGQENAREACGVIVELIKSKKMA GRAVLLAGPPGTGKTALALAI AQELGSKVPFCPMVGSEVYSTEIKKTEVLMENFRAIGLRIK ETKEYEYEGEVTELTPECETENPMGGYGKTISHVVIIGLKTAKGTKQLKLDPSIFESLQKERVEAG DVIYIEANSGAVKRQGRCDTYATEFDLEAE EYVPLPKGDVHKKKEIIQDVTLHDLVDVANARP QGGQDILSMMGQLMKPKKTEITDKLRGEINKVVKYIDQGIAELVPGVLFVDEVHMLDIECF TYLHRALESSIAPIVIFASNRGNCVIRGTEDITSPHGIPLDLLDRVMIIRTMLYTPQEMKQIIKIR AQTEGINISEEALNHLGEIGTKTTLRYSVQLLTPANLLAKINGKDSIEKEHVVEEISELFYDAKSS AKILADQQDKYMK
Isotype	IgG2a kappa
Clonality	Monoclonal
Clone Number	3G4-1F8

Biorbyt Ltd.

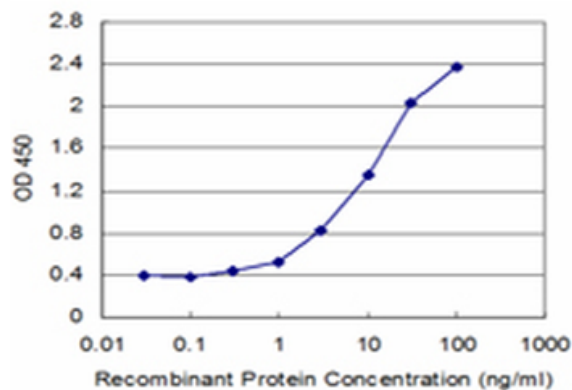
7 Signet Court, Swann's Road,
Cambridge, CB5 8LA, United Kingdom
Email: info@biorbyt.com, support@biorbyt.com
Phone: [+44 \(0\) 1223 859-353](tel:+44(0)1223859353) | Fax: [+1 \(415\) 651-8558](tel:+1(415)6518558)

Biorbyt LLC.

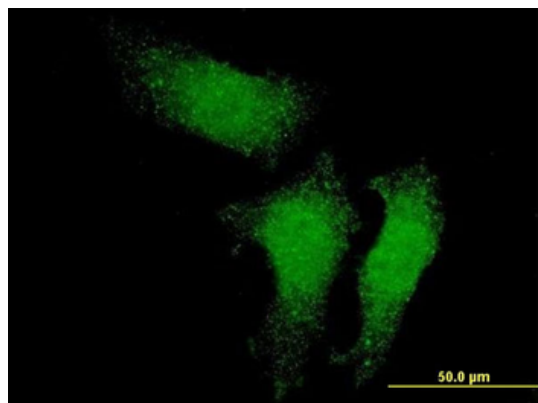
68 TW Alexander Drive,
Durham, NC, 27713, United States
Email: info@biorbyt.com, support@biorbyt.com
Phone: [+1 \(415\) 906-5211](tel:+1(415)9065211) | Fax: [+1 \(415\) 651-8558](tel:+1(415)6518558)

NCBI**AAH02993****Expiration Date**

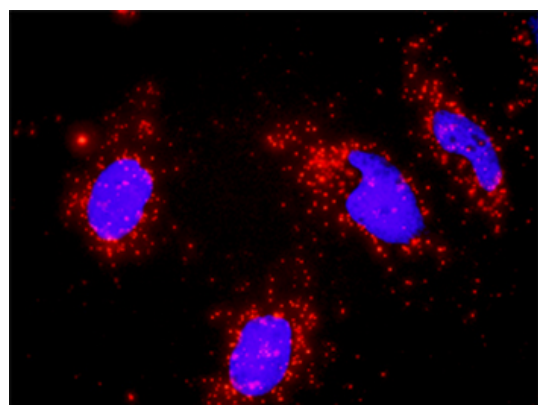
12 months from date of receipt.



Detection limit for recombinant GST tagged RUVBL1 is approximately 0.3 ng/ml as a capture antibody.



Immunofluorescence of monoclonal antibody to RUVBL1 on HeLa cell. [antibody concentration 10 ug/ml]



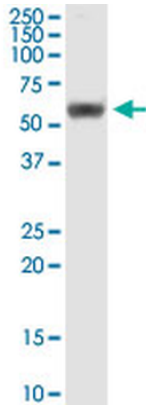
Proximity Ligation Analysis of protein-protein interactions between MAP3K7 and RUVBL1. HeLa cells were stained with anti-MAP3K7 rabbit purified polyclonal 1:1200 and anti-RUVBL1 mouse monoclonal antibody 1:50. Each red dot represents the detection of protein-protein interaction complex, and nuclei were counterstained with DAPI (blue).

Biorbyt Ltd.

7 Signet Court, Swann's Road,
Cambridge, CB5 8LA, United Kingdom
Email: info@biorbyt.com, support@biorbyt.com
Phone: [+44 \(0\) 1223 859-353](tel:+44(0)1223859353) | Fax: [+1 \(415\) 651-8558](tel:+1(415)6518558)

Biorbyt LLC.

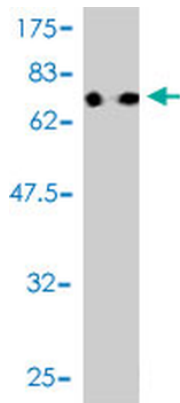
68 TW Alexander Drive,
Durham, NC, 27713, United States
Email: info@biorbyt.com, support@biorbyt.com
Phone: [+1 \(415\) 906-5211](tel:+1(415)9065211) | Fax: [+1 \(415\) 651-8558](tel:+1(415)6518558)



RUVBL1 monoclonal antibody (M01), clone 3G4-1F8. Western Blot analysis of RUVBL1 expression in human pancreas.



Western Blot analysis of RUVBL1 expression in transfected 293T cell line by RUVBL1 monoclonal antibody (M01), clone 3G4-1F8. Lane 1: RUVBL1 transfected lysate (Predicted MW: 50.2 KDa). Lane 2: Non-transfected lysate.



Western Blot detection against Immunogen (75.9 KDa).

Biorbyt Ltd.

7 Signet Court, Swann's Road,
Cambridge, CB5 8LA, United Kingdom
Email: info@biorbyt.com, support@biorbyt.com
Phone: [+44 \(0\) 1223 859-353](tel:+44(0)1223859353) | Fax: [+1 \(415\) 651-8558](tel:+1(415)6518558)

Biorbyt LLC.

68 TW Alexander Drive,
Durham, NC, 27713, United States
Email: info@biorbyt.com, support@biorbyt.com
Phone: [+1 \(415\) 906-5211](tel:+1(415)9065211) | Fax: [+1 \(415\) 651-8558](tel:+1(415)6518558)