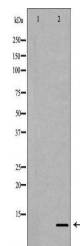


Product Datasheet

Histone H4R3me2a antibody (orb229089)

Description	Rabbit polyclonal antibody to Histone H4R3me2a
Species/Host	Rabbit
Reactivity	Human, Mouse, Rat
Conjugation	Unconjugated
Tested Applications	ChIP, ICC, IF, IP, WB
Storage	Maintain refrigerated at 2-8°C for up to 2 weeks. For long term storage store at -20°C in small aliquots to prevent freeze-thaw cycles.
Note	For research use only
Clonality	Polyclonal
Dilution Range	WB: 1:500-1:2000, IF/ICC: 1:50-1:200, IP: 1:50-1:100, ChIP: 1:50-1:200
Expiration Date	12 months from date of receipt.



Western blot analysis of HeLa cell line ...