

## Product Datasheet

# IL11 (Human) Recombinant Protein (P01) (orb2288369)

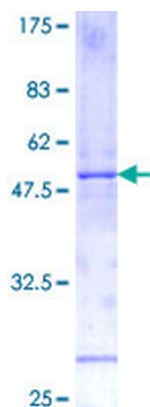
<b>Description</b>	Human IL11 full-length ORF ( NP_000632, 1 a.a. - 199 a.a.) recombinant protein with GST-tag at N-terminal.
<b>Tested Applications</b>	AP, Array, ELISA, WB
<b>Preservatives</b>	50 mM Tris-HCl, 10 mM reduced Glutathione, pH=8.0 in the elution buffer.
<b>Storage</b>	Store at -80°C. Aliquot to avoid repeated freezing and thawing.
<b>Tag</b>	GST
<b>Note</b>	For research use only
<b>Application notes</b>	Best use within three months from the date of receipt of this protein.
<b>Protein Sequence</b>	MNCVCRLVLVVLSLWPDTAVAPGPPPGPPRVSPDPRAELDSTVLLTRSLLADTRQLAAQLR DKFPADGDHNLDSLPTLAMSAGALGALQLPGVLTRLRADLLSYLRHVQWLR RAGGSSLKT LEPELGTLQARLDRLRLQLLMSRLALPQPPDPAPPLAPPSSAWGGIRAALAILGGLHLT LDWAVRGLLLLKTRL
<b>Clonality</b>	Recombinant
<b>NCBI</b>	<a href="#">NP_000632</a>
<b>Expiration Date</b>	6 months from date of receipt.

### Biorbyt Ltd.

7 Signet Court, Swann's Road,  
Cambridge, CB5 8LA, United Kingdom  
Email: [info@biorbyt.com](mailto:info@biorbyt.com), [support@biorbyt.com](mailto:support@biorbyt.com)  
Phone: [+44 \(0\) 1223 859-353](tel:+44(0)1223859353) | Fax: [+1 \(415\) 651-8558](tel:+1(415)6518558)

### Biorbyt LLC.

68 TW Alexander Drive,  
Durham, NC, 27713, United States  
Email: [info@biorbyt.com](mailto:info@biorbyt.com), [support@biorbyt.com](mailto:support@biorbyt.com)  
Phone: [+1 \(415\) 906-5211](tel:+1(415)9065211) | Fax: [+1 \(415\) 651-8558](tel:+1(415)6518558)



---

**Biorbyt Ltd.**

7 Signet Court, Swann's Road,  
Cambridge, CB5 8LA, United Kingdom  
Email: [info@biorbyt.com](mailto:info@biorbyt.com), [support@biorbyt.com](mailto:support@biorbyt.com)  
Phone: [+44 \(0\) 1223 859-353](tel:+44(0)1223859353) | Fax: [+1 \(415\) 651-8558](tel:+1(415)6518558)

**Biorbyt LLC.**

68 TW Alexander Drive,  
Durham, NC, 27713, United States  
Email: [info@biorbyt.com](mailto:info@biorbyt.com), [support@biorbyt.com](mailto:support@biorbyt.com)  
Phone: [+1 \(415\) 906-5211](tel:+1(415)9065211) | Fax: [+1 \(415\) 651-8558](tel:+1(415)6518558)