

Product Datasheet

DNA polymerase theta antibody (orb228781)

Description Rabbit polyclonal antibody to DNA Polymerase theta

Species/Host Rabbit

Reactivity Human, Mouse, Rat

Conjugation Unconjugated

Tested Applications IHC-P, WB

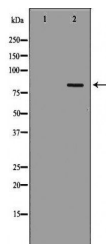
Storage Maintain refrigerated at 2-8°C for up to 2 weeks. For long term storage store at -20°C in small aliquots to prevent freeze-thaw cycles.

Note For research use only

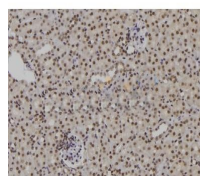
Clonality Polyclonal

Dilution Range WB: 1:500-1:2000, IHC-P: 1:50-1:200

Expiration Date 12 months from date of receipt.



Western blot analysis of A431 cell lines...



Immunohistochemical staining of mouse ki...