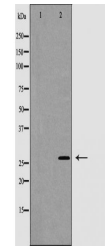


Product Datasheet

Caspase 1 (Phospho-Ser376) antibody (orb228077)

Description	Rabbit polyclonal antibody to Caspase 1 (Phospho-Ser376)
Species/Host	Rabbit
Reactivity	Human, Mouse
Conjugation	Unconjugated
Tested Applications	WB
Immunogen	Synthesized peptide derived from human CASP1(Accession P29466), corresponding to amino acid residues around phosphorylated Ser376.
Form/Appearance	Rabbit IgG in phosphate buffered saline , pH 7.4, 150mM NaCl, 0.02% sodium azide and 50% glycerol
Storage	Store at -20 °C. Stable for 12 months from date of receipt
Note	For research use only
Isotype	IgG
Clonality	Polyclonal
Purity	The antibody is from purified rabbit serum by affinity purification via sequential chromatography on phospho-peptide and non-phospho-peptide affinity columns
MW	45 kDa
Dilution Range	WB: 1:500-1:2000
Expiration Date	12 months from date of receipt.



Western blot analysis of 293 cells using...