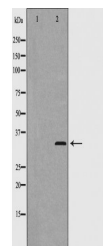


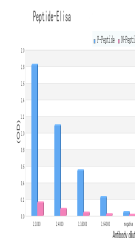
Product Datasheet

Cyclin D2 (Phospho-Thr280) antibody (orb228069)

Description	Rabbit polyclonal antibody to Cyclin D2
Species/Host	Rabbit
Reactivity	Human, Mouse, Rat
Conjugation	Unconjugated
Tested Applications	WB
Storage	Maintain refrigerated at 2-8°C for up to 2 weeks. For long term storage store at -20°C in small aliquots to prevent freeze-thaw cycles.
Note	For research use only
Clonality	Polyclonal
Dilution Range	WB: 1:500-1:2000
Expiration Date	12 months from date of receipt.



Western blot analysis of 293 cells using...



Line graph illustrates about the Ag-Ab r...