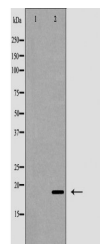


Product Datasheet

CD3 Zeta (Phospho-Tyr142) antibody (orb228064)

Description	Rabbit polyclonal antibody to CD3E
Species/Host	Rabbit
Reactivity	Human, Mouse
Conjugation	Unconjugated
Tested Applications	WB
Storage	Maintain refrigerated at 2-8°C for up to 2 weeks. For long term storage store at -20°C in small aliquots to prevent freeze-thaw cycles.
Note	For research use only
Clonality	Polyclonal
Dilution Range	WB: 1:500-1:2000
Expiration Date	12 months from date of receipt.



Western blot analysis of Jurkat cell lys...