

---

## Product Datasheet

### Mesothelin antibody (orb2276572)

**Description**

Mesothelin antibody validated for immunohistochemistry

**Species/Host**

Mouse

**Reactivity**

Human

**Conjugation**

Unconjugated

**Tested Applications**

IHC

**Immunogen**

Recombinant fragment (around aa 273-407) of human Mesothelin (MSLN) protein (exact sequence is proprietary)

**Storage**

Antibody with azide – store at 2 to 8°C. Antibody without azide – store at -20 to -80°C. Antibody is stable for 24 months. Non- hazardous. No MSD required.

**Note**

For research use only

**Application notes**

Positive Control: Tonsil: A fraction of squamous epithelial cells of the tonsil crypts should show strong mesothelin immunostaining. Fallopian tube: An at least moderate mesothelin positivity should be seen at the apical membrane of epithelial cells. Negative Control: Tonsil: Squamous epithelial cells of the tonsil surface and all lymphocytes must not show mesothelin immunostaining. Cellular Localization: Cell Surface and Secreted Protocol Recommendations: Manual Protocol: Freshly cut sections should be used (less than 10 days between cutting and staining). Heat-induced antigen retrieval for 5 minutes in an autoclave at 121°C in pH 7,8 Target Retrieval Solution buffer. Apply the antibody at a dilution of 1:150 at 37°C for 60 minutes. Visualization of bound antibody by the EnVision Kit (Dako, Agilent) according to the manufacturer's directions.

**Isotype**

IgG2b, kappa

**Clonality**

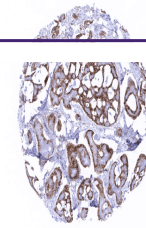
Monoclonal

**Uniprot ID**
[Q13421](#)
**Dilution Range**

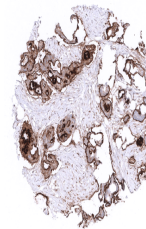
1:100-1:200

**Expiration Date**

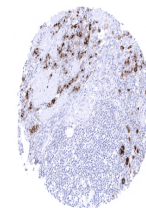
12 months from date of receipt.



Breast  
Adenoid cystic  
breast cancer  
with...



Ovary Strong  
predominantly  
membranous  
me...



Stomach  
Strong  
predominantly  
cytoplasmic...