
Product Datasheet

Mesothelin antibody (orb2276570)

Description

Mesothelin antibody validated for immunohistochemistry

Species/Host

Mouse

Reactivity

Human

Conjugation

Unconjugated

Tested Applications

IHC

Immunogen

Recombinant fragment (around aa 273-407) of human Mesothelin (MSLN) protein (exact sequence is proprietary)

Storage

Antibody with azide – store at 2 to 8°C. Antibody without azide – store at -20 to -80°C. Antibody is stable for 24 months. Non- hazardous. No MSD required.

Note

For research use only

Application notes

Positive Control: Tonsil: A fraction of squamous epithelial cells of the tonsil crypts should show strong mesothelin immunostaining. Fallopian tube: An at least moderate mesothelin positivity should be seen at the apical membrane of epithelial cells. Negative Control: Tonsil: Squamous epithelial cells of the tonsil surface and all lymphocytes must not show mesothelin immunostaining. Cellular Localization: Cell Surface and Secreted Protocol Recommendations: Manual Protocol: Freshly cut sections should be used (less than 10 days between cutting and staining). Heat-induced antigen retrieval for 5 minutes in an autoclave at 121°C in pH 7,8 Target Retrieval Solution buffer. Apply the antibody at a dilution of 1:150 at 37°C for 60 minutes. Visualization of bound antibody by the EnVision Kit (Dako, Agilent) according to the manufacturer's directions.

Isotype

IgG2b, kappa

Clonality

Monoclonal

Uniprot ID

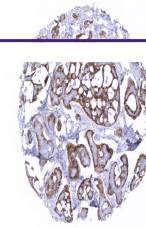
[Q13421](#)

Dilution Range

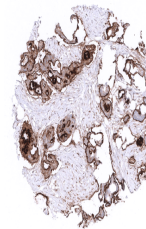
1:100-1:200

Expiration Date

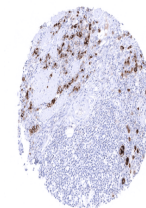
12 months from date of receipt.



Breast
Adenoid cystic
breast cancer
with...



Ovary Strong
predominantly
membranous
me...



Stomach
Strong
predominantly
cytoplasmic...