

Product Datasheet

EpCAM antibody (orb2276550)

Description

EpCAM antibody validated for immunohistochemistry on

Species/Host

Rabbit

Reactivity

Human

Conjugation

Unconjugated

Tested Applications

IHC

Immunogen

Recombinant fragment from the extracellular domain of human EpCAM protein (around aa100-224) (exact sequence is proprietary)

Storage

Antibody with azide – store at 2 to 8°C. Antibody without azide – store at -20 to -80°C. Antibody is stable for 24 months. Non- hazardous. No MSD required.

Note

For research use only

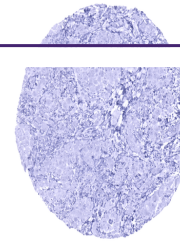
Application notes

Positive Control: Kidney: In kidney, distal tubule cells must show a strong predominantly membranous staining, while at a least moderate predominantly basolateral staining must be seen in the majority of proximal tubules cells and in scattered epithelial cells lining the Bowman capsule.

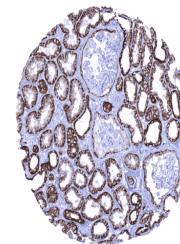
Negative Control: Tonsil: EpCAM staining should be absent in lymphocytes or smooth muscle cells of the vessels.

Cellular Localization: Cell Surface & Cytoplasmic

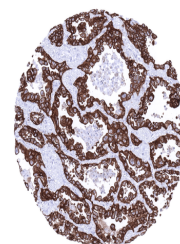
Protocol Recommendations: Manual Protocol: Freshly cut sections should be used (less than 10 days between cutting and staining). Heat-induced antigen retrieval for 5 minutes in an autoclave at 121°C in pH 7,8 Target Retrieval Solution buffer. Apply the antibody at a dilution of 1:150 at 37°C for 60 minutes. Visualization of bound antibody by the EnVision Kit (Dako, Agilent) according to the manufacturer's directions.



EPCAM immunostaining is lacking in an ep...



In normal kidney EpCAM staining is stron...



Strong EPCAM staining in an adenocarcino...

Isotype

IgG

Clonality

Monoclonal

Uniprot ID
P16422
Dilution Range

1:100-1:200

Expiration Date

12 months from date of receipt.