

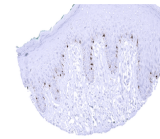
Product Datasheet

**PMEL / gp100 / Melanosome antibody
(orb2276545)**

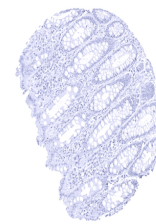
Description

PMEL / gp100 / Melanosome antibody validated for

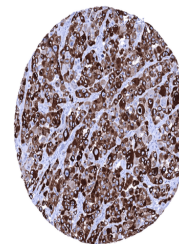
Species/Host	Tissues
Reactivity	Rabbit
Conjugation	Human
Tested Applications	Unconjugated
Storage	IHC
Note	Antibody with azide - store at 2 to 8°C. Antibody without azide - store at -20 to -80°C. Antibody is stable for 24 months. Non- hazardous. No MSD required.
Application notes	For research use only
Isotype	Positive Control: Skin: A moderate to strong cytoplasmic PMEL immunostaining should be seen in all melanocytes of the skin. Negative Control: Colon: PMEL immunostaining should be completely absent in all cells. Cellular Localization: Cytoplasmic Protocol Recommendations: Manual Protocol: Freshly cut sections should be used (less than 10 days between cutting and staining). Heat-induced antigen retrieval for 5 minutes in an autoclave at 121°C in pH 7,8 Target Retrieval Solution buffer. Apply the antibody at a dilution of 1:150 at 37°C for 60 minutes. Visualization of bound antibody by the EnVision Kit (Dako, Agilent) according to the manufacturer's directions.
Clonality	IgG
Uniprot ID	Monoclonal
Dilution Range	P40967
Expiration Date	1:100-1:200
	12 months from date of receipt.



Strong PMEL immunostaining in melanocyte...



Rectum mucosa.



Strong cytoplasmic PMEL immunostaining i...