

---

## Product Datasheet

**PMEL / gp100 / Melanosome antibody  
(orb2276544)**

**Description**

PMEL / gp100 / Melanosome antibody validated for

**Tissues**
**Species/Host** Rabbit

**Reactivity** Human

**Conjugation** Unconjugated

**Tested Applications** IHC

**Storage** Antibody with azide - store at 2 to 8°C. Antibody without azide - store at -20 to -80°C. Antibody is stable for 24 months. Non- hazardous. No MSD required.

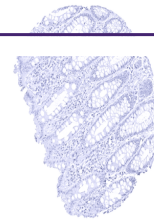
**Note** For research use only

**Application notes** Positive Control: Skin: A moderate to strong cytoplasmic PMEL immunostaining should be seen in all melanocytes of the skin. Negative Control: Colon: PMEL immunostaining should be completely absent in all cells. Cellular Localization: Cytoplasmic Protocol Recommendations: Manual Protocol: Freshly cut sections should be used (less than 10 days between cutting and staining). Heat-induced antigen retrieval for 5 minutes in an autoclave at 121°C in pH 7,8 Target Retrieval Solution buffer. Apply the antibody at a dilution of 1:150 at 37°C for 60 minutes. Visualization of bound antibody by the EnVision Kit (Dako, Agilent) according to the manufacturer's directions.

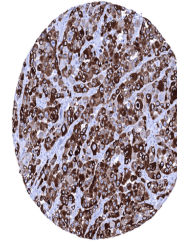
**Isotype** IgG

**Clonality** Monoclonal

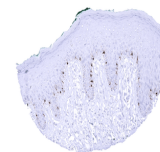
**Uniprot ID** [P40967](#)
**Dilution Range** 1:100-1:200

**Expiration Date** 12 months from date of receipt.


Rectum mucosa.



Strong cytoplasmic PMEL immunostaining i...



Strong PMEL immunostaining in melanocyte...