

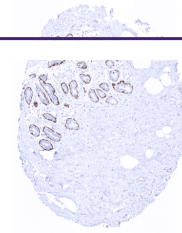
## Product Datasheet

### Calponin 1 antibody (orb2276528)

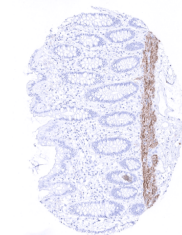
**Description**

Calponin 1 antibody validated for immunohistochemistry

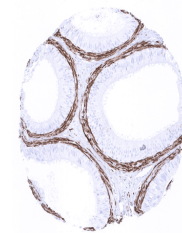
<b>Species/Host</b>	Rabbit
<b>Reactivity</b>	Human
<b>Conjugation</b>	Unconjugated
<b>Tested Applications</b>	IHC
<b>Immunogen</b>	Synthetic peptide corresponding to residues on the C-terminus of human Calponin was used as an immunogen.
<b>Storage</b>	Antibody with azide – store at 2 to 8°C. Antibody without azide – store at -20 to -80°C. Antibody is stable for 24 months. Non- hazardous. No MSD required.
<b>Note</b>	For research use only
<b>Application notes</b>	<p>Positive Control: Colon: A moderate to strong Calponin 1 staining should be seen in the muscularis mucosae, muscularis propria and in the walls of larger blood vessels. Negative Control: Colon: Calponin 1 staining should be absent in all epithelial cells. Cellular Localization: Cytoplasmic Protocol Recommendations: Manual Protocol: Freshly cut sections should be used (less than 10 days between cutting and staining). Heat-induced antigen retrieval for 5 minutes in an autoclave at 121°C in pH 7,8 Target Retrieval Solution buffer. Apply the antibody at a dilution of 1:150 at 37°C for 60 minutes. Visualization of bound antibody by the EnVision Kit (Dako, Agilent) according to the manufacturer's directions.</p>
<b>Isotype</b>	IgG
<b>Clonality</b>	Monoclonal
<b>Uniprot ID</b>	<a href="#">P51911</a>
<b>Dilution Range</b>	1:100-1:200
<b>Expiration Date</b>	12 months from date of receipt.



Calponin 1 immunostaining is regularly s...



A moderate intensity Calponin 1 immunost...



A strong calponin 1 immunostaining occur...