

---

## Product Datasheet

### NSE gamma antibody (orb2276526)

**Description**

NSE gamma antibody validated for

**Species/Host**

Mouse

**Reactivity**

Human

**Conjugation**

Unconjugated

**Tested Applications**

IHC

**Immunogen**

A synthetic peptide of human NSE gamma (around aa416-433) (exact sequence is proprietary)

**Storage**

Antibody with azide – store at 2 to 8°C. Antibody without azide – store at -20 to -80°C. Antibody is stable for 24 months. Non- hazardous. No MSD required.

**Note**

For research use only

**Application notes**

Positive Control: In the colon, axons and ganglion cells in lamina propria and muscular wall must show at least a moderate NSE staining, while epithelial and lymphatic cells remain negative. Negative Control: In the colon, epithelial and lymphatic cells do not show NSE staining. Cellular Localization: Cytoplasmic Protocol Recommendations: Manual Protocol: Freshly cut sections should be used (less than 10 days between cutting and staining). Heat-induced antigen retrieval for 5 minutes in an autoclave at 121°C in pH 7,8 Target Retrieval Solution buffer. Apply the antibody at a dilution of 1:150 at 37°C for 60 minutes. Visualization of bound antibody by the EnVision Kit (Dako, Agilent) according to the manufacturer's directions.

**Isotype**

IgG1, kappa

**Clonality**

Monoclonal

**Uniprot ID**

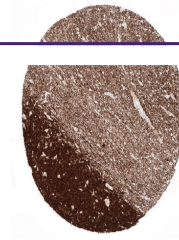
**P09104**

**Dilution Range**

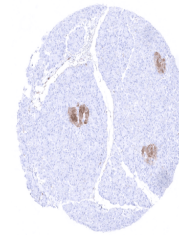
1:100-1:200

**Expiration Date**

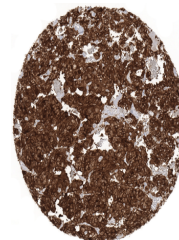
12 months from date of receipt.



A strong NSE immunostaining is seen in t...



Positive NSE immunostaining of islets of...



Strong NSE immunostaining in an adrenal ...