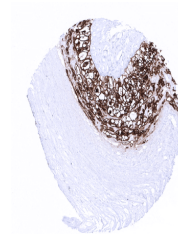


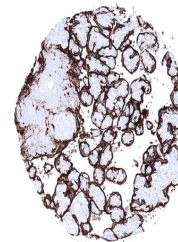
Product Datasheet

PLAP antibody (orb2276451)

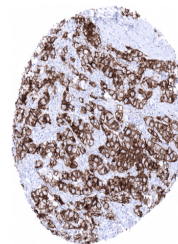
Description	PLAP antibody validated for immunohistochemistry on 76 different Normal Tissues
Species/Host	Rabbit
Reactivity	Human
Conjugation	Unconjugated
Tested Applications	IHC
Immunogen	Recombinant full-length human ALPP protein
Storage	Antibody with azide – store at 2 to 8°C. Antibody without azide – store at -20 to -80°C. Antibody is stable for 24 months. Non- hazardous. No MSD required.
Note	For research use only
Application notes	Positive Control: Placenta (mature): A strong membranous and cytoplasmic staining of cytotrophoblast and syncytiotrophoblast must be seen. Negative Control: Appendix: PLAP immunostaining must be absent in all structures. Cellular Localization: Cell Surface and Cytoplasmic Protocol Recommendations: Manual Protocol: Freshly cut sections should be used (less than 10 days between cutting and staining). Heat-induced antigen retrieval for 5 minutes in an autoclave at 121°C in pH 7,8 Target Retrieval Solution buffer. Apply the antibody at a dilution of 1:150 at 37°C for 60 minutes. Visualization of bound antibody by the EnVision Kit (Dako, Agilent) according to the manufacturer’s directions.
Isotype	IgG
Clonality	Monoclonal
Uniprot ID	P05187
Dilution Range	1:100-1:200
Expiration Date	12 months from date of receipt.



In the placenta, membranous PLAP immunos...



Placenta, mature: In the placenta, PLAP ...



Strong PLAP Immunostaining in all cells ...