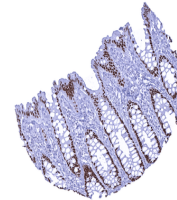


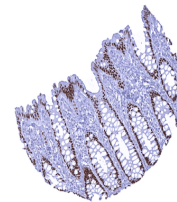
Product Datasheet

SATB2 antibody (orb2276449)

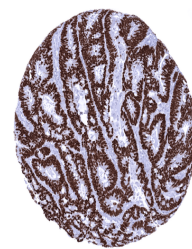
Description	SATB2 antibody validated for immunohistochemistry on 76 different Normal Tissues
Species/Host	Rabbit
Reactivity	Human
Conjugation	Unconjugated
Tested Applications	IHC
Immunogen	Synthetic peptide corresponding to residues within aa200-300 corresponding to human SATB2
Storage	Antibody with azide – store at 2 to 8°C. Antibody without azide – store at -20 to -80°C. Antibody is stable for 24 months. Non- hazardous. No MSD required.
Note	For research use only
Application notes	Positive Control: Colon: A strong nuclear staining should be seen in virtually all columnar epithelial cells. Negative Control: Colon: SATB2 staining should be absent in stromal and smooth muscle cells. Cellular Localization: Nuclear Protocol Recommendations: Manual Protocol: Freshly cut sections should be used (less than 10 days between cutting and staining). Heat-induced antigen retrieval for 5 minutes in an autoclave at 121°C in pH 7,8 Target Retrieval Solution buffer. Apply the antibody at a dilution of 1:150 at 37°C for 60 minutes. Visualization of bound antibody by the EnVision Kit (Dako, Agilent) according to the manufacturer's directions.
Isotype	IgG
Clonality	Monoclonal
Uniprot ID	Q9UPW6
Dilution Range	1:100-1:200
Expiration Date	12 months from date of receipt.



A strong nuclear SATB2 immunostaining is...



A strong nuclear SATB2 immunostaining is...



Colon Colorectal adenocarcinoma showing ...