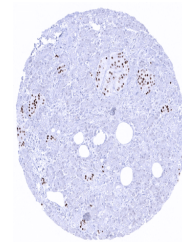


Product Datasheet

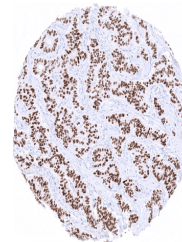
INSM1 antibody (orb2276424)

Description	INSM1 antibody validated for immunohistochemistry on 76 different Normal Tissues
Species/Host	Rabbit
Reactivity	Human
Conjugation	Unconjugated
Tested Applications	IHC
Immunogen	Recombinant fragment (around aa81-125) corresponding to the N-terminus of human INSM1
Storage	Antibody with azide – store at 2 to 8°C. Antibody without azide – store at -20 to -80°C. Antibody is stable for 24 months. Non- hazardous. No MSD required.
Note	For research use only
Application notes	Positive Control: Pancreas: Islet cells should show a moderate to strong INSM1 immunostaining Negative Control: Pancreas: All acinar cells should be negative Cellular Localization: Nuclear Protocol Recommendations: Manual Protocol: Freshly cut sections should be used (less than 10 days between cutting and staining). Heat-induced antigen retrieval for 5 minutes in an autoclave at 121°C in pH 7,8 Target Retrieval Solution buffer. Apply the antibody at a dilution of 1:100 at 37°C for 60 minutes. Visualization of bound antibody by the EnVision Kit (Dako, Agilent) according to the manufacturer's directions.
Isotype	IgG
Clonality	Monoclonal
Uniprot ID	Q01101
Dilution Range	1:75-1:150
Expiration Date	12 months from date of receipt.

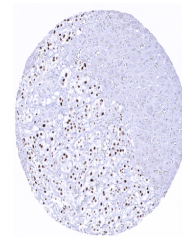


Moderate to strong INSM1 immunostaining

...



Strong INSM1 immunostaining in a low gra...



Strong INSM1 immunostaining of medullar ...