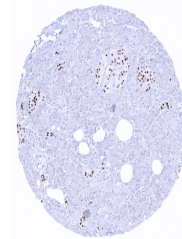


## Product Datasheet

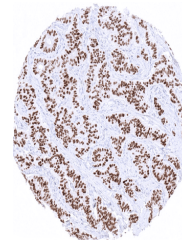
### INSM1 antibody (orb2276423)

<b>Description</b>	INSM1 antibody validated for immunohistochemistry on 76 different Normal Tissues
<b>Species/Host</b>	Rabbit
<b>Reactivity</b>	Human
<b>Conjugation</b>	Unconjugated
<b>Tested Applications</b>	IHC
<b>Immunogen</b>	Recombinant fragment (around aa81-125) corresponding to the N-terminus of human INSM1
<b>Storage</b>	Antibody with azide – store at 2 to 8°C. Antibody without azide – store at -20 to -80°C. Antibody is stable for 24 months. Non- hazardous. No MSD required.
<b>Note</b>	For research use only
<b>Application notes</b>	Positive Control: Pancreas: Islet cells should show a moderate to strong INSM1 immunostaining Negative Control: Pancreas: All acinar cells should be negative Cellular Localization: Nuclear Protocol Recommendations: Manual Protocol: Freshly cut sections should be used (less than 10 days between cutting and staining). Heat-induced antigen retrieval for 5 minutes in an autoclave at 121°C in pH 7,8 Target Retrieval Solution buffer. Apply the antibody at a dilution of 1:100 at 37°C for 60 minutes. Visualization of bound antibody by the EnVision Kit (Dako, Agilent) according to the manufacturer's directions.
<b>Isotype</b>	IgG
<b>Clonality</b>	Monoclonal
<b>Uniprot ID</b>	<a href="#">Q01101</a>
<b>Dilution Range</b>	1:75-1:150
<b>Expiration Date</b>	12 months from date of receipt.

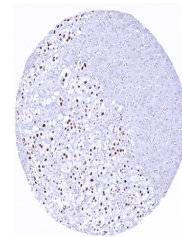


Moderate to strong INSM1 immunostaining

...



Strong INSM1 immunostaining in a low gra...



Strong INSM1 immunostaining of medullar ...