
Product Datasheet

**Transcription factor E3 / TFE3 antibody
(orb2276368)**

Description

Transcription factor E3 / TFE3 antibody validated for

Species/Host

Rabbit

Reactivity

Human

Conjugation

Unconjugated

Tested Applications

IHC

Immunogen

Recombinant human TFE3 fragment

Storage

Antibody with azide – store at 2 to 8°C. Antibody without azide – store at -20 to -80°C. Antibody is stable for 24 months. Non- hazardous. No MSD required.

Note

For research use only

Application notes

Positive Control: Kidney: A moderate to strong TFE3 staining should be seen in a fraction of glomerular cells and an at least weak TFE3 staining should be seen in a subset of tubular and collecting duct cells. Negative Control: Colon: TFE3 staining should be absent in epithelial cells (some very faint staining can occasionally occur at the surface). Cellular Localization: Nuclear Protocol Recommendations: Manual Protocol: Freshly cut sections should be used (less than 10 days between cutting and staining). Heat-induced antigen retrieval for 5 minutes in an autoclave at 121°C in pH 7,8 Target Retrieval Solution buffer. Apply the antibody at a dilution of 1:100 at 37°C for 60 minutes. Visualization of bound antibody by the EnVision Kit (Dako, Agilent) according to the manufacturer's directions.

Isotype

IgG

Clonality

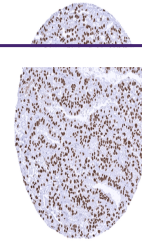
Monoclonal

Uniprot ID
P19532
Dilution Range

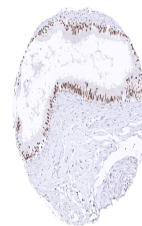
1:100-1:200

Expiration Date

12 months from date of receipt.



Strong nuclear TFE3 positivity in a rena...



Strong TFE3 staining of epithelial cells...



TFE3 staining is lacking in epithelial C...