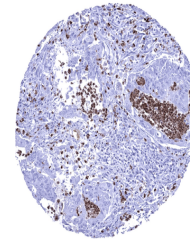


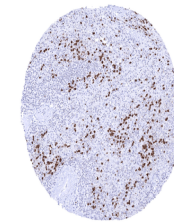
## Product Datasheet

### S100A12 antibody (orb2276341)

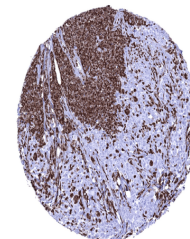
<b>Description</b>	S100A12 antibody validated for immunohistochemistry on 76 different Normal Tissues
<b>Species/Host</b>	Mouse
<b>Reactivity</b>	Human
<b>Conjugation</b>	Unconjugated
<b>Tested Applications</b>	IHC
<b>Storage</b>	Antibody with azide – store at 2 to 8°C. Antibody without azide – store at -20 to -80°C. Antibody is stable for 24 months. Non- hazardous. No MSD required.
<b>Note</b>	For research use only
<b>Application notes</b>	Positive Control: Spleen: A significant number of inflammatory cells should show a strong S100A12 immunostaining while the majority of cells remain completely negative. Negative Control: Colon: All epithelial and muscular cells must not show any S100A12 immunostaining. Few scattered S100A12 positive inflammatory cells can occur (mostly within blood vessels) Cellular Localization: Intracellular, Secreted Protocol Recommendations: Manual Protocol: Freshly cut sections should be used (less than 10 days between cutting and staining). Heat-induced antigen retrieval for 5 minutes in an autoclave at 121°C in pH 7,8 Target Retrieval Solution buffer. Apply the antibody at a dilution of 1:150 at 37°C for 60 minutes. Visualization of bound antibody by the EnVision Kit (Dako, Agilent) according to the manufacturer’s directions.
<b>Isotype</b>	IgG1, kappa
<b>Clonality</b>	Monoclonal
<b>Uniprot ID</b>	<b>P80511</b>
<b>Dilution Range</b>	1:100-1:200
<b>Expiration Date</b>	12 months from date of receipt.



Colon Colorectal adenocarcinoma showing ...



Spleen S100A12 immunostaining is seen in...



Stomach Gastric adenocarcinoma densely in...