

---

## Product Datasheet

### Occludin antibody (orb2276303)

**Description**

Occludin antibody validated for immunohistochemistry on

**Species/Host**

Mouse

**Reactivity**

Human

**Conjugation**

Unconjugated

**Tested Applications**

IHC

**Immunogen**

ecombinant fragment of human Occludin protein (around aa 282-415) (exact sequence is proprietary)

**Storage**

Antibody with azide – store at 2 to 8°C. Antibody without azide – store at -20 to -80°C. Antibody is stable for 24 months. Non- hazardous. No MSD required.

**Note**

For research use only

**Application notes**

Positive Control: Colon: A strong membranous occludin staining of epithelial cells should be seen with a particularly strong staining at the apical/luminal membranes. Negative Control: Colon: All non-epithelial and non-endothelial cells must not show any occludin staining. Cellular Localization: Cell Surface and Cytoplasmic Protocol Recommendations: Manual Protocol: Freshly cut sections should be used (less than 10 days between cutting and staining). Heat-induced antigen retrieval for 5 minutes in an autoclave at 121°C in pH 7,8 Target Retrieval Solution buffer. Apply the antibody at a dilution of 1:150 at 37°C for 60 minutes. Visualization of bound antibody by the EnVision Kit (Dako, Agilent) according to the manufacturer's directions.

**Isotype**

IgG1, kappa

**Clonality**

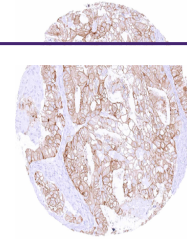
Monoclonal

**Uniprot ID**
[Q16625](#)
**Dilution Range**

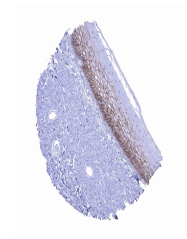
1:100-1:200

**Expiration Date**

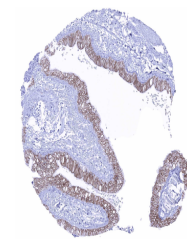
12 months from date of receipt.



Clear cell ovarian carcinoma with modera...



In squamous epithelium occludin positiv...



Membranous occludin immunostaining of re...