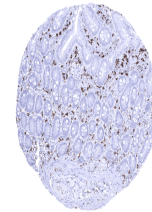


## Product Datasheet

### AIF1 antibody (orb2276293)

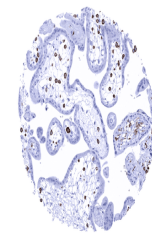
<b>Description</b>	AIF1 antibody validated for immunohistochemistry on 76 different Normal Tissues
<b>Species/Host</b>	Mouse
<b>Reactivity</b>	Human
<b>Conjugation</b>	Unconjugated
<b>Tested Applications</b>	IHC
<b>Immunogen</b>	Purified recombinant human AIF1 protein (around aa 1-146) (exact sequence is proprietary)
<b>Storage</b>	Antibody with azide – store at 2 to 8°C. Antibody without azide – store at -20 to -80°C. Antibody is stable for 24 months. Non- hazardous. No MSD required.
<b>Note</b>	For research use only
<b>Application notes</b>	Positive Control: Colon: An at least moderate to strong cytoplasmic AIF1 immunostaining should be seen in mucosal macrophages. Negative Control: Colon: AIF1 immunostaining should be absent in all non-inflammatory cells. Cellular Localization: Cytoplasmic and cell surface. Protocol Recommendations: Manual Protocol: Freshly cut sections should be used (less than 10 days between cutting and staining). Heat-induced antigen retrieval for 5 minutes in an autoclave at 121°C in pH 7,8 Target Retrieval Solution buffer. Apply the antibody at a dilution of 1:150 at 37°C for 60 minutes. Visualization of bound antibody by the EnVision Kit (Dako, Agilent) according to the manufacturer's directions.
<b>Isotype</b>	IgG2c, kappa
<b>Clonality</b>	Monoclonal
<b>Uniprot ID</b>	<b>P55008</b>
<b>Dilution Range</b>	1:100-1:200
<b>Expiration Date</b>	12 months from date of receipt.



Duodenum mucosa A strong AIF1 positivity...



Malignant mesothelioma epitheloid subtyp...



Placenta early AIF1 expression is partic...