
Product Datasheet

CD141 antibody (orb2276262)

Description

CD141 antibody validated for immunohistochemistry on 76

Species/Host

Mouse

Reactivity

Human

Conjugation

Unconjugated

Tested Applications

IHC

Immunogen

Recombinant fragment (around aa 69-194) of human Thrombomodulin (CD141) protein (exact sequence is proprietary)

Storage

Antibody with azide – store at 2 to 8°C. Antibody without azide – store at -20 to -80°C. Antibody is stable for 24 months. Non- hazardous. No MSD required.

Note

For research use only

Application notes

Positive Control: Lung: A strong staining should be seen in endothelial cells, and at least a weak to moderate membranous CD141 staining should be seen in alveolar macrophages. Negative Control: Colon: Kidney: Epithelial cells should not stain for CD141. Cellular Localization: Cell Surface and Cytoplasmic Protocol Recommendations: Manual Protocol: Freshly cut sections should be used (less than 10 days between cutting and staining). Heat-induced antigen retrieval for 5 minutes in an autoclave at 121°C in pH 7,8 Target Retrieval Solution buffer. Apply the antibody at a dilution of 1:150 at 37°C for 60 minutes. Visualization of bound antibody by the EnVision Kit (Dako, Agilent) according to the manufacturer's directions.

Isotype

IgG1, kappa

Clonality

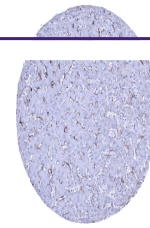
Monoclonal

Uniprot ID
P07204
Dilution Range

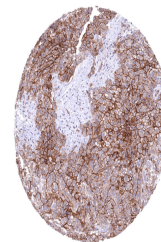
1:100-1:200

Expiration Date

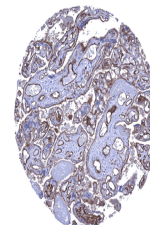
12 months from date of receipt.



Liver
Moderate
CD141
staining of
sinusoi...



Lung
Malignant
mesothelioma
with strong ...



Placenta
mature
Strong CD141
staining of...