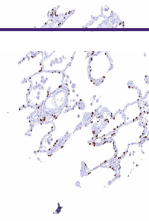

Product Datasheet

**TTF-1 / Thyroid Transcription Factor 1 / NKX2-1
antibody (orb2276213)**

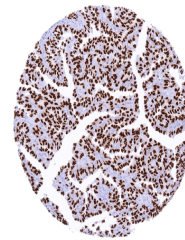
Description

TTF-1 / Thyroid Transcription Factor 1 / NKX2-1

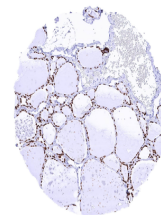
	on 76 di...
Species/Host	Rabbit
Reactivity	Human
Conjugation	Unconjugated
Tested Applications	IHC
Immunogen	Recombinant human TTF-1 protein
Storage	Antibody with azide – store at 2 to 8°C. Antibody without azide – store at -20 to -80°C. Antibody is stable for 24 months. Non-hazardous. No MSD required.
Note	For research use only
Application notes	Positive Control: Lung: Nuclear TTF1 staining should be strong in pneumocytes and in basal cells of the terminal bronchioles while a weaker, still moderate to strong staining should be seen in columnar epithelial cells of the terminal bronchioles (low expressor control). Negative Control: Liver: TTF1 staining must not be seen in any cells. Cellular Localization: Nucleus Protocol Recommendations: Manual Protocol: Freshly cut sections should be used (less than 10 days between cutting and staining). Heat-induced antigen retrieval for 5 minutes in an autoclave at 121°C in pH 7,8 Target Retrieval Solution buffer. Apply the antibody at a dilution of 1:100 at 37°C for 60 minutes. Visualization of bound antibody by the EnVision Kit (Dako, Agilent) according to the manufacturer's directions.
Isotype	IgG
Clonality	Monoclonal
Uniprot ID	P43699
Dilution Range	1:100-1:200
Expiration Date	12 months from date of receipt.



Intense TTF1 positivity of pneumocytes.



Pulmonary adenocarcinoma with strong TTF...



Thyroid gland with strong TTF1 staining ...