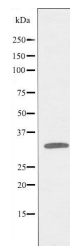


Product Datasheet

MRGRG antibody (orb227493)

Description	Rabbit polyclonal antibody to MRGRG
Species/Host	Rabbit
Reactivity	Human
Conjugation	Unconjugated
Tested Applications	ICC, IF, WB
Storage	Maintain refrigerated at 2-8°C for up to 2 weeks. For long term storage store at -20°C in small aliquots to prevent freeze-thaw cycles.
Note	For research use only
Clonality	Polyclonal
Dilution Range	WB: 1:500-1:1000, IF/ICC: 1:100-1:500
Expiration Date	12 months from date of receipt.



Western blot analysis of HUVEC cells
usi...