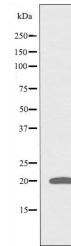


Product Datasheet

COPZ1 antibody (orb226466)

Description	Rabbit polyclonal antibody to COPZ1
Species/Host	Rabbit
Reactivity	Human, Mouse
Conjugation	Unconjugated
Tested Applications	IHC-P, WB
Storage	Maintain refrigerated at 2-8°C for up to 2 weeks. For long term storage store at -20°C in small aliquots to prevent freeze-thaw cycles.
Note	For research use only
Clonality	Polyclonal
Dilution Range	WB: 1:500-1:1000, IHC-P: 1:50-1:200
Expiration Date	12 months from date of receipt.



Western blot analysis of Jurkat cells an...