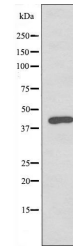


## Product Datasheet

### CMKLR1 antibody (orb226111)

<b>Description</b>	Rabbit polyclonal antibody to CMKLR1
<b>Species/Host</b>	Rabbit
<b>Reactivity</b>	Human, Mouse, Rat
<b>Conjugation</b>	Unconjugated
<b>Tested Applications</b>	WB
<b>Storage</b>	Maintain refrigerated at 2-8°C for up to 2 weeks. For long term storage store at -20°C in small aliquots to prevent freeze-thaw cycles.
<b>Note</b>	For research use only
<b>Clonality</b>	Polyclonal
<b>Dilution Range</b>	WB: 1:500-1:1000
<b>Expiration Date</b>	12 months from date of receipt.



Western blot analysis of HepG2 cells  
HeL...