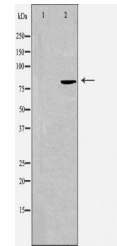


Product Datasheet

SEMA4A antibody (orb225920)

Description	Rabbit polyclonal antibody to SEMA4A
Species/Host	Rabbit
Reactivity	Human, Mouse, Rat
Conjugation	Unconjugated
Tested Applications	IHC-P, WB
Storage	Maintain refrigerated at 2-8°C for up to 2 weeks. For long term storage store at -20°C in small aliquots to prevent freeze-thaw cycles.
Note	For research use only
Clonality	Polyclonal
Dilution Range	WB: 1:500-1:1000, IHC-P: 1:50-1:200
Expiration Date	12 months from date of receipt.



Western blot analysis of COS-7 cells and...