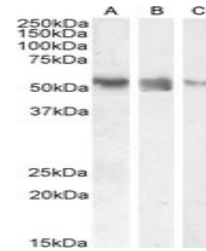


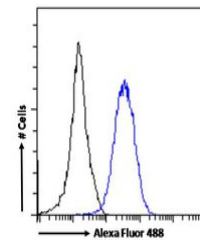
Product Datasheet

RORC antibody (orb22531)

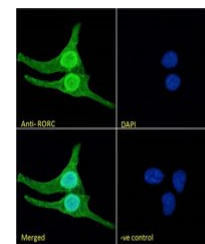
Description	Goat Polyclonal to RORC
Species/Host	Goat
Reactivity	Bovine, Canine, Human, Mouse
Conjugation	Unconjugated
Tested Applications	ELISA, FC, IF, WB
Target	RORC (aa200-212)
Preservatives	Supplied at 0.5 mg/ml in Tris saline, 0.02% sodium azide, pH 7.3 with 0.5% bovine serum albumin. Aliquot and store at -20°C. Minimize freezing and thawing.
Storage	Aliquot and store at -20°C. Minimize freezing and thawing.
Note	For research use only
Application notes	This antibody is expected to recognize both reported isoforms (NP_005051.2; NP_001001523.1).WB: Approx 55kDa band observed in Human Colon lysates (calculated MW of 55.8kDa according to NP_001001523.1). Recommended concentration: 0.1-0.3 µg/ml.
Protein Sequence	CHLEYSPIRGKAE
Clonality	Polyclonal
MW	58.2; 55.8
Entrez	6097
Dilution Range	ELISA: 1:16000, WB: 0.1-0.3 µg/ml
Expiration Date	12 months from date of receipt.



Western blot analysis of Human Colon (A)...



Flow cytometric analysis of paraformalde...



Immunofluorescence analysis of paraforma...