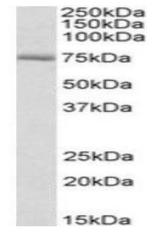


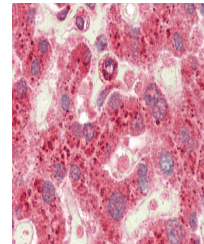
## Product Datasheet

### CROT antibody (orb22526)

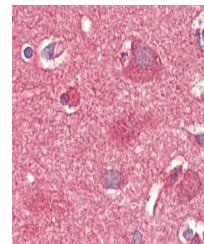
<b>Description</b>	Goat Polyclonal to CROT
<b>Species/Host</b>	Goat
<b>Reactivity</b>	Rat
<b>Conjugation</b>	Unconjugated
<b>Tested Applications</b>	ELISA, IHC, WB
<b>Target</b>	Crot (rat)
<b>Preservatives</b>	Supplied at 0.5 mg/ml in Tris saline, 0.02% sodium azide, pH 7.3 with 0.5% bovine serum albumin. Aliquot and store at -20°C. Minimize freezing and thawing.
<b>Storage</b>	Aliquot and store at -20°C. Minimize freezing and thawing.
<b>Note</b>	For research use only
<b>Application notes</b>	WB: Approx 75kDa band observed in Rat Kidney lysates (calculated MW of 70.3kDa according to NP_114193.1). Recommended concentration: 0.3-1 µg/ml.
<b>Protein Sequence</b>	RSCLETDAEKLVE
<b>Clonality</b>	Polyclonal
<b>MW</b>	70.3
<b>Dilution Range</b>	ELISA: 1:32000, WB: 0.3-1 µg/ml, IHC-P: 5 µg/ml
<b>Expiration Date</b>	12 months from date of receipt.



Western blot analysis of Rat Kidney lysa...



Immunohistochemical staining of Human Li...



Immunohistochemical staining of Human Co...