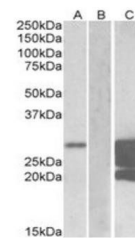


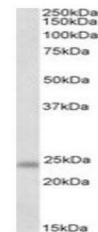
Product Datasheet

GM2A antibody (orb22519)

Description	Goat Polyclonal to GM2A
Species/Host	Goat
Reactivity	Canine, Human, Mouse, Rat
Conjugation	Unconjugated
Tested Applications	ELISA, WB
Target	GM2A (aa 179-189)
Preservatives	Supplied at 0.5 mg/ml in Tris saline, 0.02% sodium azide, pH 7.3 with 0.5% bovine serum albumin. Aliquot and store at -20°C. Minimize freezing and thawing.
Storage	Aliquot and store at -20°C. Minimize freezing and thawing.
Note	For research use only
Application notes	This antibody is expected to recognize isoform 1 (NP_000396.2) only. WB: In transfected HEK293 transiently expressing full-length Human GM2A (myc and DYKDDDDK tagged), a band of approx. 28kDa was observed. No bands were observed in mock-transfected HEK293 and the same band was observed using anti-DYKDDDDK tag antibody. Recommended concentration, 1-2 µg/ml.
Protein Sequence	KRLGCIKIAAS
Clonality	Polyclonal
MW	20.8; 20.1
Entrez	2760
Dilution Range	ELISA: 1:4000, WB: 0.3-1 µg/ml
Expiration Date	12 months from date of receipt.



Western blot analysis of HEK293 lysate u...



Western blot analysis of Rat Kidney lysa...