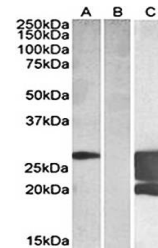


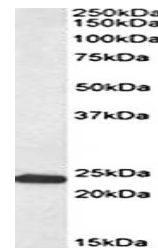
Product Datasheet

GM2A antibody (orb22518)

| | |
|----------------------------|--|
| Description | Goat Polyclonal to GM2A |
| Species/Host | Goat |
| Reactivity | Human, Mouse, Rat |
| Conjugation | Unconjugated |
| Tested Applications | ELISA, WB |
| Target | GM2A (aa 164-175) |
| Preservatives | Supplied at 0.5 mg/ml in Tris saline, 0.02% sodium azide, pH 7.3 with 0.5% bovine serum albumin. Aliquot and store at -20°C. Minimize freezing and thawing. |
| Storage | Aliquot and store at -20°C. Minimize freezing and thawing. |
| Note | For research use only |
| Application notes | This antibody is expected to recognize isoform 1 (NP_000396.2) only. WB: In transfected HEK293 transiently expressing full-length Human GM2A (myc and DYKDDDDK tagged), a band of approx. 28kDa was observed. No bands were observed in mock-transfected HEK293 and the same band was observed using anti-DYKDDDDK tag antibody. Recommended concentration, 1-2 µg/ml. |
| Protein Sequence | TTGNYRIESVLS |
| Clonality | Polyclonal |
| MW | 20.8; 20.1 |
| Entrez | 2760 |
| Dilution Range | ELISA: 1:4000, WB: 0.3-1 µg/ml |
| Expiration Date | 12 months from date of receipt. |



Western blot analysis of HEK293 lysate (...)



Western blot analysis of Rat Kidney lysa...