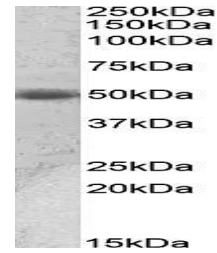


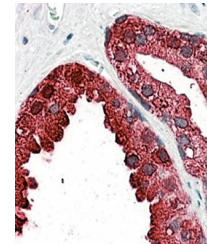
Product Datasheet

ACPP antibody (orb22510)

| | |
|----------------------------|--|
| Description | Goat Polyclonal to ACPP |
| Species/Host | Goat |
| Reactivity | Human |
| Conjugation | Unconjugated |
| Tested Applications | ELISA, IHC, WB |
| Target | ACPP / PAP (aa269-282) |
| Preservatives | Supplied at 0.5 mg/ml in Tris saline, 0.02% sodium azide, pH 7.3 with 0.5% bovine serum albumin. Aliquot and store at -20°C. Minimize freezing and thawing. |
| Storage | Aliquot and store at -20°C. Minimize freezing and thawing. |
| Note | For research use only |
| Application notes | WB: Approx 50kDa band observed in Human Prostate lysates (calculated MW of 48.3kDa according to NP_001127666.1). Recommended concentration: 0.01-0.03 µg/ml. |
| Protein Sequence | NHMKRATQIPSYKK |
| Clonality | Polyclonal |
| MW | 48.3; 44.6 |
| Entrez | 55 |
| Dilution Range | ELISA: 1:32000, WB: 0.01-0.03 µg/ml, IHC-P: 3-5µg/ml |
| Expiration Date | 12 months from date of receipt. |



Western blot analysis of human prostate ...



Immunohistochemical analysis of formalin...