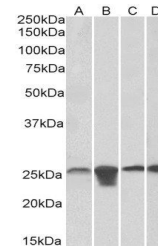


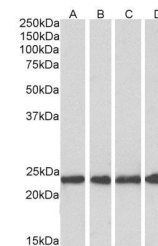
## Product Datasheet

### SOD2 antibody (orb22499)

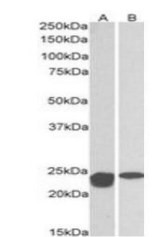
<b>Description</b>	Goat polyclonal antibody to SOD2
<b>Species/Host</b>	Goat
<b>Reactivity</b>	Bovine, Canine, Human, Mouse, Porcine, Rat, Zebrafish
<b>Conjugation</b>	Unconjugated
<b>Tested Applications</b>	ELISA, IHC, WB
<b>Target</b>	MNSOD (aa119-130)
<b>Preservatives</b>	Supplied at 0.5 mg/ml in Tris saline, 0.02% sodium azide, pH 7.3 with 0.5% bovine serum albumin. Aliquot and store at -20°C. Minimize freezing and thawing.
<b>Storage</b>	Aliquot and store at -20°C. Minimize freezing and thawing.
<b>Note</b>	For research use only
<b>Application notes</b>	WB: Approx 24kDa band observed in Human Brain (cerebellum) lysates and in Mouse and Rat Spinal Cord lysates (calculated MW of 24.8kDa according to Human NP_000627.2, and 24.6kDa according to Mouse NP_038699.2). Recommended concentration: 0.01-0.1 µg/ml.
<b>Protein Sequence</b>	EAIKRDFGSFDK
<b>Clonality</b>	Polyclonal
<b>MW</b>	24.8; 20.7
<b>Entrez</b>	<b>6648</b>
<b>Dilution Range</b>	ELISA: 1:64000, WB: 0.01-0.1 µg/ml, IHC-P: 5 µg/ml
<b>Expiration Date</b>	12 months from date of receipt.



Western blot analysis of staining of HeL...



Western blot analysis of staining of Hum...



Western blot analysis of Mouse and Rat S...