

## Product Datasheet

### **POU2AF1 antibody (orb22486)**

**Description**

Goat polyclonal antibody to POU2AF1

**Species/Host**

Goat

**Reactivity**

Bovine, Canine, Human

**Conjugation**

Unconjugated

**Tested**

ELISA, IHC, WB

**Applications**
**Target**

POU2AF1

**Preservatives**

Supplied at 0.5 mg/ml in Tris saline, 0.02% sodium azide, pH 7.3 with 0.5% bovine serum albumin. Aliquot and store at -20°C. Minimize freezing and thawing.

**Storage**

Aliquot and store at -20°C. Minimize freezing and thawing.

**Note**

For research use only

**Application notes**

IHC: In paraffin embedded Human Spleen shows nuclear staining in the germinal center with stronger nucleoli staining in some of the B cells.  
 Recommended concentration, 3-5µg/ml. WB: In transfected HEK293 transiently expressing full-length Human POU2AF1 (myc and DYKDDDDK tagged), a band of approx. 38kDa was observed. No bands were observed in mock-transfected HEK293 and the same band was observed using anti-DYKDDDDK tag antibody. Recommended concentration, 1-2 µg/ml.

**Protein Sequence**

DSDAYALNHTLSVE

**Clonality**

Polyclonal

**MW**

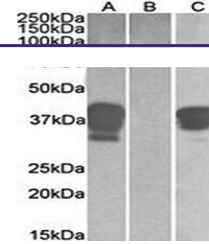
27.4

**Entrez**
[5450](#)
**Dilution Range**

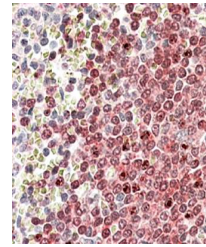
ELISA: 1:8000, WB: 1-2 µg/ml, IHC-P: 3-5µg/ml

**Expiration Date**

12 months from date of receipt.



Western blot analysis of HEK293 lysate (...



Immunohistochemical analysis of formalin...