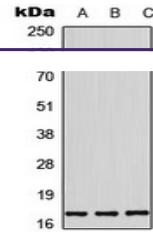

Product Datasheet

Histone H3 (phospho-T11) antibody (orb224184)

Description

Rabbit polyclonal antibody to Histone H3



Western blot analysis of Histone H3 (Pho...

Species/Host

Rabbit

Reactivity

Human, Mouse, Porcine, Rabbit, Rat, Zebrafish

Conjugation

Unconjugated

Tested Applications

IF, WB

Immunogen

KLH-conjugated synthetic phosphopeptide corresponding to residues surrounding T11 of human Histone H3 protein. The exact sequence is proprietary.

Target

HIST1H3A

Preservatives

Liquid in 0.42% Potassium phosphate, 0.87% Sodium chloride, pH 7.3, 30% glycerol, and 0.01% sodium azide.

Form/Appearance

Liquid in 0.42% Potassium phosphate, 0.87% Sodium chloride, pH 7.3, 30% glycerol, and 0.01% sodium azide.

Storage

Maintain refrigerated at 2-8°C for up to 2 weeks. For long term storage store at -20°C in small aliquots to prevent freeze-thaw cycles.

Note

For research use only

Clonality

Polyclonal

Source

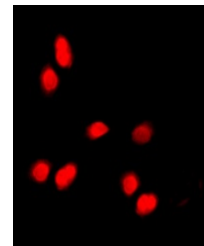
Rabbit

Uniprot ID
[P84228](#), [P68431](#), [P68433](#), [P84245](#), [Q6LED0](#), [Q71DI3](#), [P84243](#), [P84244](#)
Entrez
[8357](#), [319152](#), [291159](#), [15078](#), [8354](#), [8353](#), [8355](#), [8351](#), [8968](#), [100361558](#), [15077](#), [8352](#), [8350](#), [8356](#), [8358](#)
Dilution Range

WB: 1:500-1:1000, IF/ICC: 1:100-1:500

Expiration Date

12 months from date of receipt.



Immunofluorescent analysis of Histone H3...