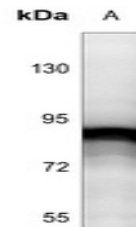


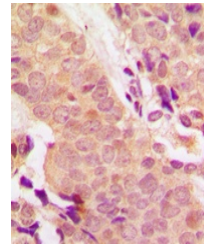
## Product Datasheet

### STAT5 (phospho-Y694/699) antibody (orb224181)

|                            |   |
|----------------------------|---|
| <b>Description</b>         | Rabbit polyclonal antibody to STAT5 (Phospho-Y694/699)  |
| <b>Species/Host</b>        | Rabbit  |
| <b>Reactivity</b>          | Human, Mouse, Porcine, Rat, Sheep   |
| <b>Conjugation</b>         | Unconjugated  |
| <b>Tested Applications</b> | IH, WB  |
| <b>Immunogen</b>           | KLH-conjugated synthetic phosphopeptide corresponding to residues surrounding Y694/699 of human STAT5 protein. The exact sequence is proprietary.   |
| <b>Target</b>              | STAT5A; STAT5B  |
| <b>Preservatives</b>       | Liquid in 0.42% Potassium phosphate, 0.87% Sodium chloride, pH 7.3, 30% glycerol, and 0.01% sodium azide.   |
| <b>Form/Appearance</b>     | Liquid in 0.42% Potassium phosphate, 0.87% Sodium chloride, pH 7.3, 30% glycerol, and 0.01% sodium azide.   |
| <b>Storage</b>             | Maintain refrigerated at 2-8°C for up to 2 weeks. For long term storage store at -20°C in small aliquots to prevent freeze-thaw cycles.             |
| <b>Note</b>                | For research use only   |
| <b>Clonality</b>           | Polyclonal  |
| <b>Source</b>              | Rabbit  |
| <b>Uniprot ID</b>          | <a href="#">P42229</a> , <a href="#">P42230</a> , <a href="#">P42232</a> , <a href="#">Q62771</a> , <a href="#">P51692</a> , <a href="#">P52632</a> |
| <b>Entrez</b>              | <a href="#">20850</a> , <a href="#">6776</a> , <a href="#">20851</a> , <a href="#">25126</a> , <a href="#">24918</a> , <a href="#">6777</a>         |
| <b>Dilution Range</b>      | WB: 1:500-1:1000, IHC-P: 1:100-1:200  |
| <b>Expiration Date</b>     | 12 months from date of receipt.   |



Western blot analysis of STAT5 (Phospho-...



Immunohistochemical analysis of STAT5 (P...