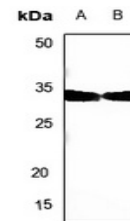


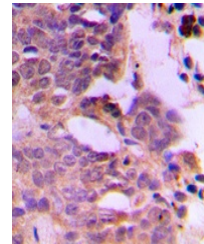
Product Datasheet

SIAH1/2 antibody (orb224178)

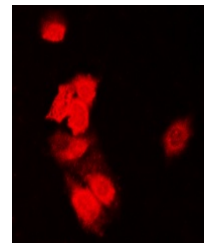
Description	Rabbit polyclonal antibody to SIAH1/2
Species/Host	Rabbit
Reactivity	Human, Mouse, Rat, Zebrafish
Conjugation	Unconjugated
Tested Applications	IF, IH, WB
Immunogen	KLH-conjugated synthetic peptide encompassing a sequence within the center region of human SIAH1/2. The exact sequence is proprietary.
Target	SIAH1; SIAH2
Preservatives	Liquid in 0.42% Potassium phosphate, 0.87% Sodium chloride, pH 7.3, 30% glycerol, and 0.01% sodium azide.
Form/Appearance	Liquid in 0.42% Potassium phosphate, 0.87% Sodium chloride, pH 7.3, 30% glycerol, and 0.01% sodium azide.
Storage	Shipped at 4°C. Upon delivery aliquot and store at -20°C for one year. Avoid freeze/thaw cycles.
Note	For research use only
Clonality	Polyclonal
Source	Rabbit
Uniprot ID	Q920M9 , O43255 , Q8R4T2 , Q06986 , Q8IUQ4
Entrez	20439 , 6478 , 6477 , 140941 , 140593
Dilution Range	WB: 1:500-1:1000, IHC-P: 1:100-1:200, IF/ICC: 1:100-1:500
Expiration Date	12 months from date of receipt.



Western blot analysis of SIAH1/2 express...



Immunohistochemical analysis of SIAH1/2 ...



Immunofluorescent analysis of SIAH1/2 st...