
Product Datasheet

MKK1/2 (phospho-S222/226) antibody (orb224177)

Description

Rabbit polyclonal antibody to MKK1/2

Species/Host

Rabbit

Reactivity

Human, Mouse, Rabbit, Rat, Zebrafish

Conjugation

Unconjugated

Tested Applications

IF, IH, IP, WB

Immunogen

KLH-conjugated synthetic phosphopeptide corresponding to residues surrounding S222/226 of human MKK1/2 protein. The exact sequence is proprietary.

Target

MAP2K1; MAP2K2

Preservatives

Liquid in 0.42% Potassium phosphate, 0.87% Sodium chloride, pH 7.3, 30% glycerol, and 0.01% sodium azide.

Form/Appearance

Liquid in 0.42% Potassium phosphate, 0.87% Sodium chloride, pH 7.3, 30% glycerol, and 0.01% sodium azide.

Storage

Maintain refrigerated at 2-8°C for up to 2 weeks. For long term storage store at -20°C in small aliquots to prevent freeze-thaw cycles.

Note

For research use only

Clonality

Polyclonal

Source

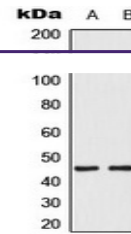
Rabbit

Uniprot ID
[Q02750](#), [Q01986](#), [P36506](#), [P31938](#), [Q63932](#), [P36507](#)
Entrez
[26395](#), [170851](#), [58960](#), [5605](#), [5604](#), [26396](#)
Dilution Range

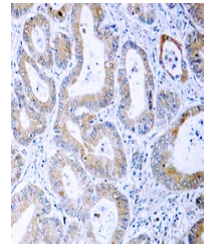
WB: 1:500-1:1000, IHC-P: 1:100-1:200, IF/ICC: 1:100-1:500, IP: 1:10-1:100

Expiration Date

12 months from date of receipt.

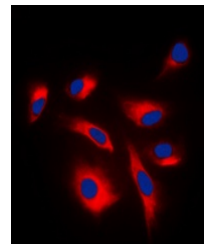


Western blot analysis of MKK1/2 (Phospho...



Immunohistochemical analysis of MKK1/2

(...)



Immunofluorescent analysis of MKK1/2

(Ph...