
Product Datasheet

MARK antibody (orb224173)

Description

Rabbit polyclonal antibody to MARK

Species/Host

Rabbit

Reactivity

Human, Mouse, Rat, Zebrafish

Conjugation

Unconjugated

Tested Applications

IF, IH, WB

Immunogen

KLH-conjugated synthetic peptide encompassing a sequence within the center region of human MARK. The exact sequence is proprietary.

Target

MARK1; MARK2; MARK3; MARK4

Preservatives

Liquid in 0.42% Potassium phosphate, 0.87% Sodium chloride, pH 7.3, 30% glycerol, and 0.01% sodium azide.

Form/Appearance

Liquid in 0.42% Potassium phosphate, 0.87% Sodium chloride, pH 7.3, 30% glycerol, and 0.01% sodium azide.

Storage

Maintain refrigerated at 2-8°C for up to 2 weeks. For long term storage store at -20°C in small aliquots to prevent freeze-thaw cycles.

Note

For research use only

Clonality

Polyclonal

Source

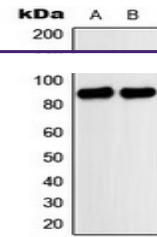
Rabbit

Uniprot ID
[P27448](#), [O08678](#), [O08679](#), [Q8VHJ5](#), [Q8VHF0](#), [Q96L34](#), [Q8CIP4](#), [Q9P0L2](#), [Q05512](#), [Q03141](#), [Q7KZ17](#)
Entrez
[4140](#), [17169](#), [232944](#), [170577](#), [60328](#), [226778](#), [4139](#), [117016](#), [13728](#), [57787](#), [2011](#)
Dilution Range

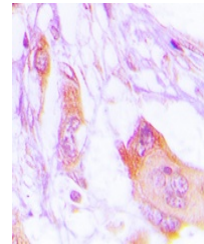
WB: 1:500-1:1000, IHC-P: 1:100-1:200, IF/ICC: 1:100-1:500

Expiration Date

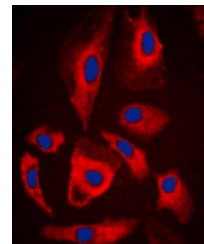
12 months from date of receipt.



Western blot analysis of MARK expression...



Immunohistochemical analysis of MARK sta...



Immunofluorescent analysis of MARK stain...