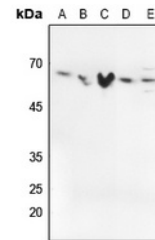


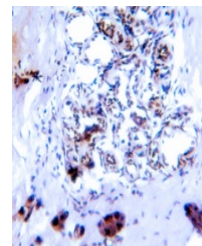
Product Datasheet

SMAD2/3 (phospho-T8) antibody (orb224172)

Description	Rabbit polyclonal antibody to SMAD2/3 (Phospho-T8)
Species/Host	Rabbit
Reactivity	Human, Mouse, Rat, Zebrafish
Conjugation	Unconjugated
Tested Applications	IH, WB
Immunogen	KLH-conjugated synthetic phosphopeptide corresponding to residues surrounding T8 of human SMAD2/3 protein. The exact sequence is proprietary.
Target	SMAD2; SMAD3
Preservatives	Liquid in 0.42% Potassium phosphate, 0.87% Sodium chloride, pH 7.3, 30% glycerol, and 0.01% sodium azide.
Form/Appearance	Liquid in 0.42% Potassium phosphate, 0.87% Sodium chloride, pH 7.3, 30% glycerol, and 0.01% sodium azide.
Storage	Maintain refrigerated at 2-8°C for up to 2 weeks. For long term storage store at -20°C in small aliquots to prevent freeze-thaw cycles.
Note	For research use only
Clonality	Polyclonal
Source	Rabbit
Uniprot ID	Q62432 , Q15796 , P84025 , O70436 , Q8BUN5 , P84022
Entrez	17126 , 17127 , 29357 , 4088 , 25631 , 4087
Dilution Range	WB: 1:500-1:1000
Expiration Date	12 months from date of receipt.



Western blot analysis of SMAD2/3 (Phospho-T8)



Immunohistochemical analysis of SMAD2/3

...