
Product Datasheet

IGF1 Receptor (phospho-Y1161) antibody (orb224171)

Description

Rabbit polyclonal antibody to IGF1 Receptor

Species/Host

Rabbit

Reactivity

Human, Mouse, Rat, Zebrafish

Conjugation

Unconjugated

Tested Applications

IF, IH, IP, WB

Immunogen

KLH-conjugated synthetic phosphopeptide corresponding to residues surrounding Y1161 of human IGF1 Receptor protein. The exact sequence is proprietary.

Target

IGF1R

Preservatives

Liquid in 0.42% Potassium phosphate, 0.87% Sodium chloride, pH 7.3, 30% glycerol, and 0.01% sodium azide.

Form/Appearance

Liquid in 0.42% Potassium phosphate, 0.87% Sodium chloride, pH 7.3, 30% glycerol, and 0.01% sodium azide.

Storage

Maintain refrigerated at 2-8°C for up to 2 weeks. For long term storage store at -20°C in small aliquots to prevent freeze-thaw cycles.

Note

For research use only

Clonality

Polyclonal

Source

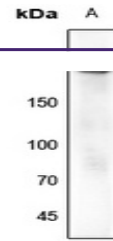
Rabbit

Uniprot ID
[P15127](#), [P24062](#), [P15208](#), [P08069](#), [P06213](#), [Q60751](#)
Entrez
[16001](#), [3643](#), [25718](#), [3480](#), [16337](#)
Dilution Range

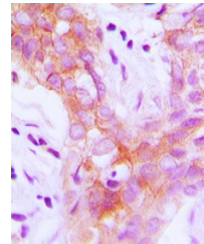
WB: 1:500-1:1000, IHC-P: 1:100-1:200, IF/ICC: 1:100-1:500, IP: 1:10-1:100

Expiration Date

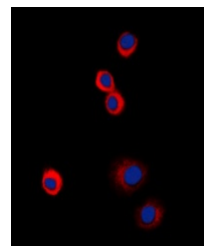
12 months from date of receipt.



Western blot analysis of IGF1 Receptor (...



Immunohistochemical analysis of IGF1 Recep...



Immunofluorescent analysis of IGF1 Recep...